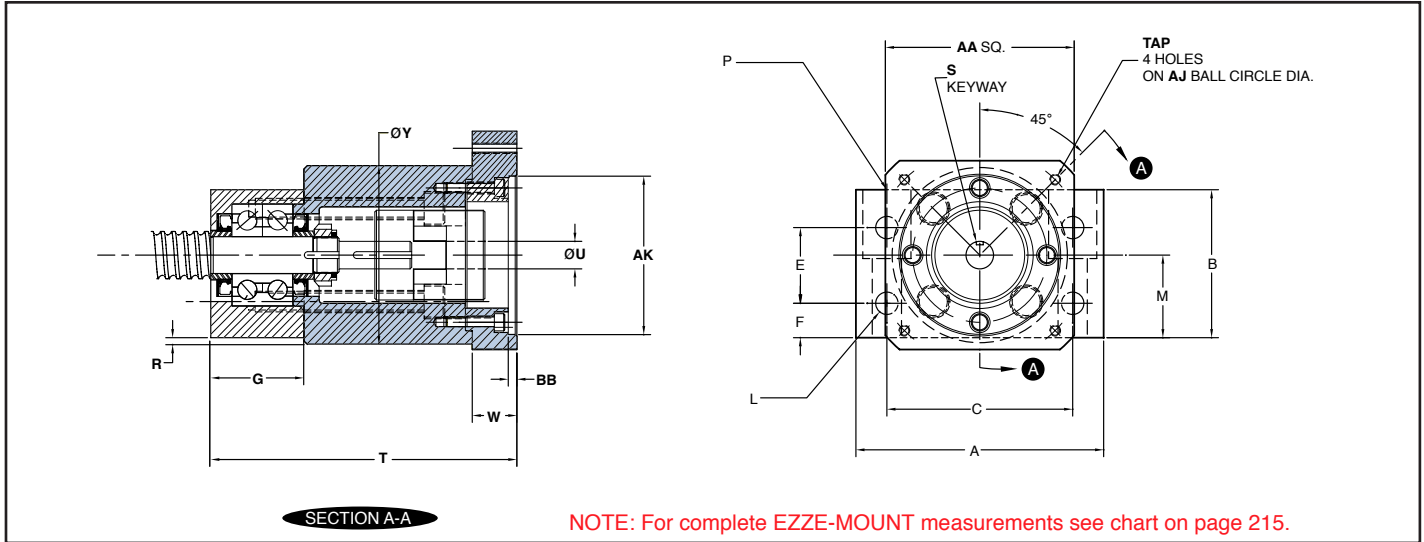


Universal-Mount with Motor Mount

Universal-Mount with motor mount includes an EZZE-MOUNT block with a motor mount for easy, accurate installation of ball screw and acme screw assemblies.



Part No.	Ref. Code	Nema Frame Ref.	AA	BB	T	U	S	Y	W	AK	AJ	TAP	R
EZM-1008-17	U1	17	1.75	0.25	3.35	0.25	0.094	1.75	0.52	.868/.871	1.725	#8-32	0.19
EZM-1009-23	U2	23	2.50	0.19	4.10	0.50	0.125	2.50	0.38	1.503/1.506	2.625	#10-32	0.26
EZM-3010-23	U2	23	2.50	0.19	4.10	0.50	0.125	2.50	0.38	1.503/1.506	2.625	#10-32	0.26
EZM-3012-23	U2	23	2.50	0.19	4.48	0.50	0.125	2.50	0.38	1.503/1.506	2.625	#10-32	0.10
EZM-3012-34	U3	34	3.25	0.16	4.92	0.50	0.125	2.50	0.81	2.878/2.882	3.875	#10-32	0.10
EZM-3015-23	U2	23	2.50	0.19	4.69	0.50	0.125	2.50	0.38	1.503/1.506	2.625	#10-32	-
EZM-3015-34	U3	34	3.25	0.16	5.13	0.50	0.125	2.50	0.81	2.878/2.882	3.875	#10-32	0.19
EZM-3017-34	U3	34	3.25	0.16	5.56	0.50	0.125	3.12	0.81	2.878/2.882	3.875	#10-32	0.13
EZM-3017-42	U4	42	4.50	0.19	6.31	0.63	0.188	3.12	1.56	2.504/2.508	5.000	1/4"-20	0.13
EZM-2020-34	U3	34	3.25	0.16	5.96	0.50	0.125	3.44	0.81	2.878/2.882	3.875	#10-32	0.10
EZM-2020-42	U4	42	4.50	0.19	6.71	0.63	0.188	3.44	1.56	2.504/2.508	5.000	1/4"-20	0.10
EZM-3025-34	U3	34	4.00	0.16	6.44	0.50	0.125	4.38	0.81	2.878/2.882	3.875	#10-32	0.31
EZM-3025-42	U4	42	4.50	0.19	7.17	0.63	0.188	4.38	1.56	2.504/2.508	5.000	1/4"-20	0.31
EZM-2030-34	U3	34	4.00	0.16	6.97	0.50	0.125	4.38	0.81	2.878/2.882	3.875	#10-32	0.31
EZM-2030-42	U4	42	4.50	0.19	7.72	0.63	0.188	4.38	1.56	2.504/2.508	5.000	1/4"-20	0.31
EZM-2030-56	U5	56C	6.63 dia.	0.19	7.78	0.63	0.188	4.38	1.62	4.502/4.506	5.875	0.41 dia. Thru	0.31

HOW TO ORDER EZM MOTORMOUNT

EXAMPLE:

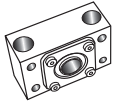
1000-0250 SRT RH / **U3** / 4N / 41.87 / SBN7508 / FS
U3 → **EZM-2020-34**

EXAMPLES OF EZM DESIGNATIONS:

U1, U2, U3 or U4 = Standard Mount available above

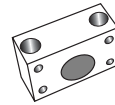
UX = modified, further explanation needed (ie: Special Frame)

The specifications and data in this publication are believed to be accurate and reliable. However, it is the responsibility of the product user to determine the suitability of Nook Industries products for a specific application. While defective products will be replaced without charge if promptly returned, no liability is assumed beyond such replacement.



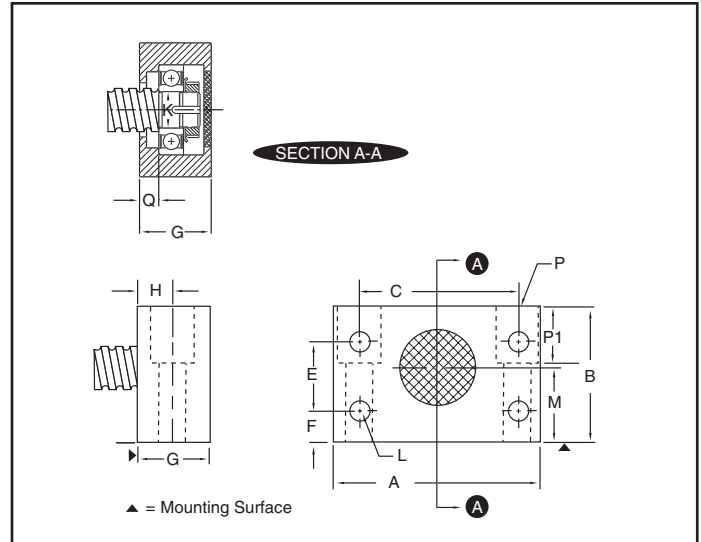
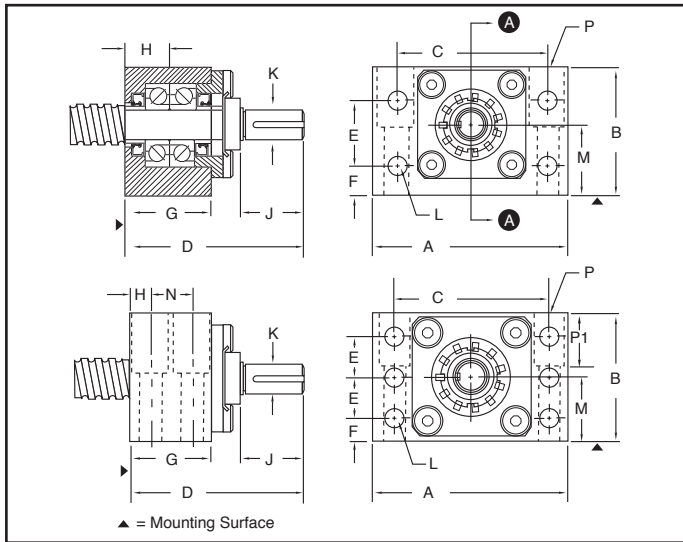
Universal-Mount Double

Double Angular Contact Bearing, which should be used with Type 3 Standard Ends



Universal-Mount Single

Single Radial Bearing, which should be used with Type 1 Standard Ends



DOUBLE Part No.	SINGLE Part No.	A	B	C	D	E	F	G		H	J	K Shaft Dia.	L Thru (4 or 6)	M	N	P			Q	END CODE	
								Single	Double							Bolt Size (2 or 4)	Thru	C'Bore			P1
EZM-1007	EZM-4007	2.00	1.38	1.50	1.94	0.88	0.25	1.06	1.06	0.50	0.46	0.187 0.186	0.22(4)	0.687	—	1/4 x 1 1/2(2)	0.28	0.41	0.41	0.19	7
EZM-1008	EZM-4008	2.00	1.38	1.50	2.00	0.88	0.25	1.06	1.06	0.50	0.56	0.250 0.249	0.22(4)	0.687	—	1/4 x 1 1/2(2)	0.28	0.41	0.41	0.19	8
EZM-1009	EZM-4009	2.75	2.00	2.00	2.38	1.38	0.31	1.19	1.19	0.56	0.56	0.250 0.249	0.28(4)	1.000	—	5/16 x 2(2)	0.34	0.50	0.56	0.38	9
EZM-3010	EZM-4010	2.75	2.00	2.00	2.50	1.38	0.31	1.19	1.19	0.56	0.69	0.312 0.311	0.28(4)	1.000	—	5/16 x 2(2)	0.34	0.50	0.56	0.38	10
EZM-3012	EZM-4012	3.50	2.22	2.75	3.29	1.25	0.50	1.38	1.38	0.69	1.30	0.406 0.405	0.28(4)	1.187	—	3/8 x 1 1/2(2)	0.41	0.62	1.00	0.33	12
EZM-3015	EZM-4015	3.50	2.52	2.75	3.50	1.25	0.80	1.38	1.38	0.69	1.30	0.500 0.499	0.28(4)	1.438	—	3/8 x 2 1/2(2)	0.41	0.62	1.00	0.33	15
EZM-3017	EZM-4017	4.50	2.69	3.38	3.65	1.38	0.62	1.69	1.69	0.84	1.30	0.500 0.499	0.41(4)	1.500	—	1/2 x 2 1/2(2)	0.53	0.88	1.25	0.38	17
EZM-2020	EZM-4020	5.00	3.03	3.75	4.03	1.50	0.75	1.72	1.72	0.86	1.30	0.625 0.624	0.47(4)	1.625	—	3/8 x 2 1/2(2)	0.66	1.00	1.50	0.55	20
EZM-3025	EZM-4025	6.50	3.69	4.75	4.45	2.00	0.88	1.94	1.94	0.97	1.61	0.750 0.749	0.66(4)	1.875	—	1/2 x 3 1/2(2)	0.91	1.38	1.75	0.52	25
EZM-2030	EZM-4030	6.50	3.69	4.75	4.86	2.00	0.88	1.94	1.94	0.97	1.81	1.000 0.999	0.66(4)	1.875	—	1/2 x 3 1/2(2)	0.91	1.38	1.75	0.52	30
EZM-3045	EZM-4045	8.50	5.62	6.62	6.68	1.81	1.00	3.47	3.47	0.88	2.19	1.375 1.374	0.81(6)	2.812	1.71	1 x 5(4)	1.03	1.56	2.13	0.98	45
EZM-3060	EZM-4060	10.00	7.50	8.00	9.22	2.50	1.50	4.19	4.19	1.03	3.68	2.250 2.249	1.03(6)	4.000	2.13	1 x 5(4)	1.03	1.56	4.00	1.22	60
EZM-3080	—	12.50	8.50	10.00	11.56	2.75	1.75	—	5.13	1.219	4.69	3.000 2.998	1.28(6)	4.500	2.68	1 1/4 x 4 1/2(4)	1.28	1.94	4.75	—	80

The specifications and data in this publication are believed to be accurate and reliable. However, it is the responsibility of the product user to determine the suitability of Nook Industries products for a specific application. While defective products will be replaced without charge if promptly returned, no liability is assumed beyond such replacement.