

The Rod-Type Limit Switch provides two SPDT switches used to limit the maximum and minimum cylinder extension. The switch assembly mounts to the cylinder tubes for convenient access and leaves the extension shaft free for other purposes. The simple design permits easy installation and maintenance. Independent adjustment allows for quick and easy fine tuning of the travel limits.

Every ActionJac™ Electric Cylinder should be installed so that electrical power to the motor is turned off and the brake engaged before the travel limits are reached, or damage to the cylinder can result.

Minimum travel is 6" and maximum travel is 72" for all ACTIONJAC™ ELECTRIC CYLINDERS equipped with rod-type limit switches.

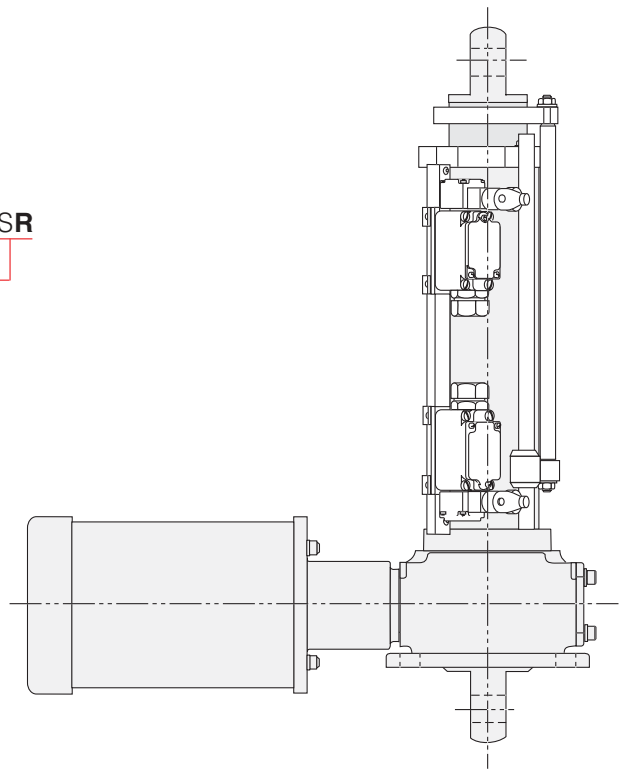
HOW TO ORDER A ROD-TYPE LIMIT SWITCH:

Specify the Electric Cylinder reference number, using the system described on page 389.

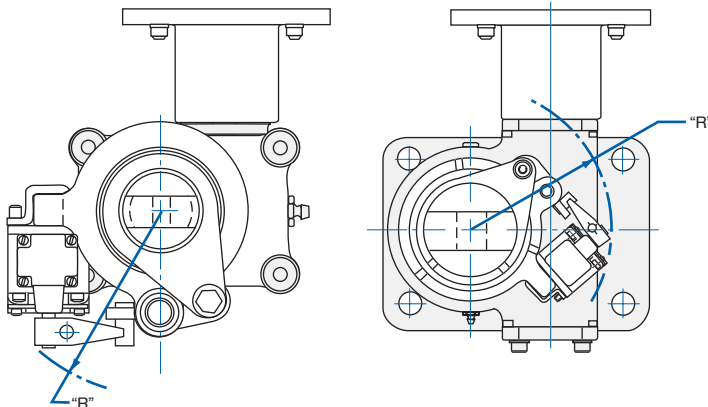
EXAMPLE: DD-1008-HD / 10BT-2 / 000-1 / CC / 24.0 / **SR**

“R” anywhere in this field _____ indicates Rod-Type Limit Switch Assembly

SWITCH ENCLOSURE RATINGS	
NEMA	1,2,3,3R,4,5,6,12,13
IEC	IP67



ROD-TYPE LIMIT SWITCH DIMENSIONS



SERIES	CLEARANCE RADIUS “R”
DD-5	4.00
DD-10	3.66
DD & RAD-25	4.00
DD & RAD-30	4.20
DD & RAD-50	4.66
DD & RAD-100	4.60
DD & RAD-200	5.40