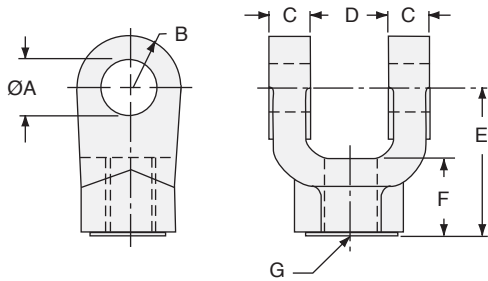


**DD & RAD ACCESSORIES**

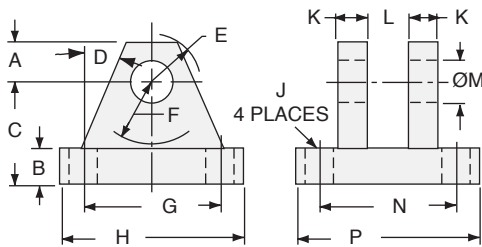
**FEMALE ROD CLEVIS**



CYLINDER SERIES	PART NUMBER	DIMENSIONS						
		$\varnothing A$	B radius	C	D	E	F	G thread
SERIES 5	B9012-5	.3145/.3165	19/64	13/64	11/32	2 1/4	13/16	5/16-24
SERIES 10	B-9012-8	.504/.502	1/2	1/2	3/4	1 1/2	3/4	7/16-20
SERIES 25 SERIES 30	B-9012-12	.752/.754	3/4	5/8	1 1/4	2 1/8	1 1/8	3/4-16
SERIES 50 SERIES 100	B-9012-16	1.002/1.004	1	3/4	1 1/2	2 15/16	1 5/8	1-14
SERIES 200	B-9012-22	1.377/1.379	1 3/8	1	2	3 3/4	2	1 1/4-12

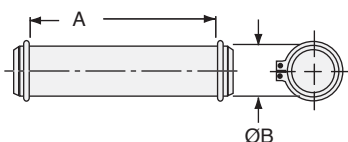
Note: Rod Clevis' with swivel bearings can be supplied. Contact Nook Engineering.

**CLEVIS BRACKET**



CLEVIS BRACKET FOR KNUCKLE		DIMENSIONS													
CYLINDER SERIES	PART NUMBER	A	B	C	D	E	F	G	H	$\varnothing J$	K	L	$\varnothing M$	N	P
SERIES 5	B-9013-7	3/8	3/8	1	25°	1/2	5/8	1.75	2 1/4	17/64	3/8	15/32	.4395/.4415	1.75	2 1/4
SERIES 10	B-9013-8	1/2	1/2	1 1/2	25°	5/8	3/4	2.55	3 1/2	13/32	1/2	3/4	.504/.502	2.55	3 1/2
SERIES 25 SERIES 30	B-9013-12	3/4	5/8	1 7/8	25°	29/32	3/4	3.82	5	17/32	5/8	1 1/4	.752/.754	3.82	5
SERIES 50 SERIES 100	B-9013-16	1	3/4	2 1/4	25°	1 1/4	1 1/2	4.95	6 1/2	21/32	3/4	1 1/2	1.002/1.004	4.95	6 1/2
SERIES 200	B-9013-22	1 3/8	7/8	3	25°	1 21/32	2	5.73	7 1/2	21/32	1	2	1.377/1.379	5.73	7 1/2

**PIVOT PIN**



CYLINDER SERIES	PART NUMBER	DIMENSIONS	
		A	$\varnothing B$
SERIES 5	B9014-7	1 15/16	.4385/.4355
SERIES 10	B-9014-8	1 7/8	.501/.498
SERIES 25 SERIES 30	B-9014-12	2 5/8	.751/.748
SERIES 50 SERIES 100	B-9014-16	3 1/8	1.001/0.999
SERIES 200	B-9014-22	4 1/8	1.376/1.373