

CONVENIENCE AND MODULARITY

PowerTrac™ modular assemblies are pre-engineered and feature an SRT ball screw, steel mounting flange with an SBN ball nut, one single and one double bearing EZZE-MOUNT™ support. One end of the mounted screw is provided with a drive shaft and keyway for coupling the assembly to a drive mechanism.



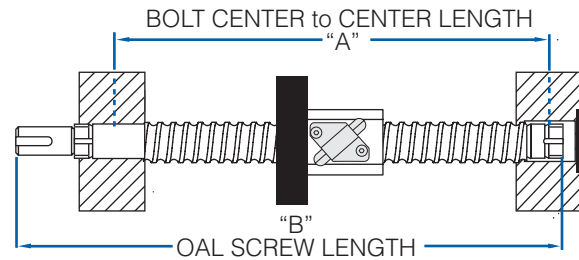
Use the reference number below to select the assembly that meets the design requirement. See page 214-218 for EZZE-MOUNT™ information and page 212-213 for End Machining information.

EXAMPLE:

0631-0200 SRT RH / EK / CN / 24.5 / SBN10325 / FS

Is a 0631-0200 SRT right hand alloy steel rolled Screw with an SBN10325 ball nut Universal Double and a Universal Single EZZE-MOUNT™ overall Length of 24.50".

Note: Ball nut direction must be specified at the time of order.



NOTE: "A" & "B" Dimensions reflect a 1/2" over travel at each end.

SCREW DIA.	LEAD	BOLT CENTER "A"	O.A.L. "B"	REFERENCE NUMBER	Page
0375-0125	0.125	3.00" + Travel	4.78" + Travel	0375-0125 SRT RH / EK / CN / "B" / SBN9574 / FS	99
0500-0200	0.200	4.71" + Travel	7.16" + Travel	0500-0200 SRT RH / EK / CN / "B" / SBN10094 / FS	100
0500-0500	0.500	4.03" + Travel	5.90" + Travel	0500-0500 SRT RH / EK / CN / "B" / SBN9582 / FS	101
0631-0200	0.200	4.09" + Travel	7.14" + Travel	0631-0200 SRT RH / EK / CN / "B" / SBN10325 / FS	102
0631-0500	0.500	4.09" + Travel	7.14" + Travel	0631-0500 SRT RH / EK / CN / "B" / SBN10113 / FS	106
0750-0200	0.200	4.25" + Travel	7.23" + Travel	0750-0200 SRT RH / EK / CN / "B" / SBN7201 / FS	107
0750-0500	0.500	5.31" + Travel	8.28" + Travel	0750-0500 SRT RH / EK / CN / "B" / SBN7500 / FS	109
0875-0200	0.200	5.38" + Travel	8.65" + Travel	0875-0200 SRT RH / EK / CN / "B" / SBN8277 / FS	110
1000-0250	0.250	5.08" + Travel	9.00" + Travel	1000-0250 SRT RH / EK / CN / "B" / SBN7508 / FS	113
1000-0500	0.500	5.85" + Travel	9.77" + Travel	1000-0500 SRT RH / EK / CN / "B" / SBN1050 / FS	116
1000-1000	1.000	5.72" + Travel	9.64" + Travel	1000-1000 SRT RH / EK / CN / "B" / SBN7509 / FS	117
1150-0200	0.200	5.44" + Travel	9.59" + Travel	1150-0200 SRT RH / EK / CN / "B" / SBN1566 / FS	118
1250-0200	0.200	6.23" + Travel	10.38" + Travel	1250-0200 SRT RH / EK / CN / "B" / SBN10627 / FS	121
1250-0500	0.500	6.52" + Travel	10.67" + Travel	1250-0500 SRT RH / EK / CN / "B" / SBN10104 / FS	123
1500-0250	0.250	5.81" + Travel	10.41" + Travel	1500-0250 SRT RH / EK / CN / "B" / SBN9587 / FS	126
1500-0473	0.413	7.25" + Travel	11.40" + Travel	1500-0473SRT RH / EK / CN / "B" / SBN7513 / FS	128
1500-0500	0.500	8.53" + Travel	12.68" + Travel	1500-0500 SRT RH / EK / CN / "B" / SBN1550 / FS	129
1500-1000	1.000	6.57" + Travel	10.72" + Travel	1500-1000 SRT RH / EK / CN / "B" / SBN8280 / FS	131
1500-1875	1.875	7.94" + Travel	12.54" + Travel	1500-1875 SRT RH / EK / CN / "B" / SBN7654 / FS	132



CONVENIENCE AND MODULARITY

PowerTrac™ modular assemblies are pre-engineered and feature an SRT ball screw, steel mounting flange with an SBN ball nut, one single and one double bearing EZZE-MOUNT™ support with motor mount. One end of the mounted screw is provided with a drive shaft and keyway for coupling the motor mount assembly.



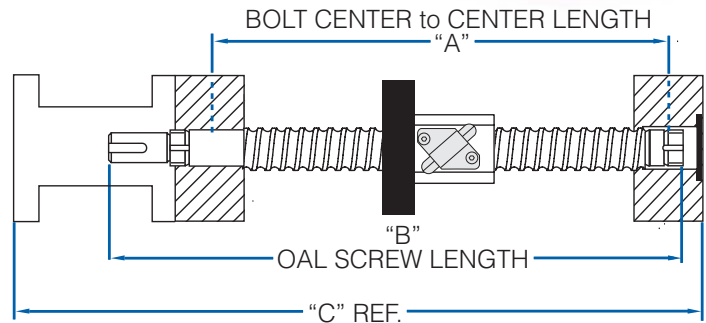
Use the reference number below to select the assembly that meets the design requirement. See page 214-218 for EZZE-MOUNT™ information and page 212-213 for End Machining information.

EXAMPLE:

0631-0200 SRT RH / U2 / CN / 24.5 / SBN10325 / FS

Is a 0631-0200 SRT right hand alloy steel rolled Screw with an SBN0827 ball nut EZM-3012-23 Universal Double Bearing Support with Motor Mount and a Universal Single EZZE-MOUNT™ overall Length of 24.50".

Note: Ball nut direction must be specified at the time of order.



NOTE: "A" & "B" Dimensions reflect a 1/2" over travel at each end.

PRECISION BALL SCREW ASSEMBLY TECHNICAL INTRODUCTION

SCREW DIA.	LEAD	ADD MEASUREMENT BELOW + TRAVEL			REFERENCE NUMBER	MOTOR MOUNT	PAGE
		BOLT CENTER "A"	O.A.L "B"	"C" REF.			
0500-0200	0.200	4.71"	7.16"	8.88"	0500-0200 SRT RH / U2 / CN / "B" / SBN10094 / FS	EZM-3010-23	100
0500-0500	0.500	4.03"	5.90"	7.44"	0500-0500 SRT RH / U1 / CN / "B" / SBN9582 / FS	EZM-1008-17	101
0631-0200	0.200	4.09"	7.14"	8.57"	0631-0200 SRT RH / U2 / CN / "B" / SBN10325 / FS	EZM-3012-23	102
0631-0500	0.500	4.09"	7.14"	8.57"	0631-0500 SRT RH / U2 / CN / "B" / SBN10113 / FS	EZM-3012-23	106
0750-0200	0.200	4.25"	7.23"	8.95"	0750-0200 SRT RH / U2 / CN / "B" / SBN7201 / FS	EZM-3015-23	107
0750-0500	0.500	5.31"	8.28"	10.00"	0750-0500 SRT RH / U2 / CN / "B" / SBN7500 / FS	EZM-3015-23	109
0875-0200	0.200	5.38"	8.65"	10.64"	0875-0200 SRT RH / U3 / CN / "B" / SBN8277 / FS	EZM-3017-34	110
1000-0250	0.250	5.08"	9.00"	11.04"	1000-0250 SRT RH / U3 / CN / "B" / SBN7508 / FS	EZM-2020-34	113
1000-0500	0.500	5.85"	9.77"	11.81"	1000-0500 SRT RH / U3 / CN / "B" / SBN1050 / FS	EZM-2020-34	116
1000-1000	1.000	5.72"	9.64"	11.68"	1000-1000 SRT RH / U3 / CN / "B" / SBN7509 / FS	EZM-2020-34	117
1150-0200	0.200	5.44"	9.59"	11.88"	1150-0200 SRT RH / U3 / CN / "B" / SBN1566 / FS	EZM-3025-34	118
1250-0200	0.200	6.23"	10.38"	12.67"	1250-0200 SRT RH / U3 / CN / "B" / SBN10627 / FS	EZM-3025-34	121
1250-0500	0.500	6.52"	10.67"	12.96"	1250-0500 SRT RH / U3 / CN / "B" / SBN10104 / FS	EZM-3025-34	123
1500-0250	0.250	5.81"	10.41"	12.79"	1500-0250 SRT RH / U3 / CN / "B" / SBN9587 / FS	EZM-2030-34	126
1500-0473	0.413	7.25"	11.40"	13.70"	1500-0473SRT RH / U3 / CN / "B" / SBN7513 / FS	EZM-3025-34	128
1500-0500	0.500	8.53"	12.68"	14.97"	1500-0500 SRT RH / U3 / CN / "B" / SBN1550 / FS	EZM-3025-34	129
1500-1000	1.000	6.57"	10.72"	13.01"	1500-1000 SRT RH / U3 / CN / "B" / SBN8280 / FS	EZM-3025-34	131
1500-1875	1.875	7.94"	12.54"	14.91"	1500-1875 SRT RH / U3 / CN / "B" / SBN7654 / FS	EZM-2030-34	132

CONVENIENCE AND MODULARITY

These PowerTrac™ modular assemblies are pre-engineered and feature a rolled ball screw, steel mounting flange with ball nut, one single and one double bearing EZZE-MOUNT™ support. Drive end of the mounted screw is provided with a HandWheel for manual operation.

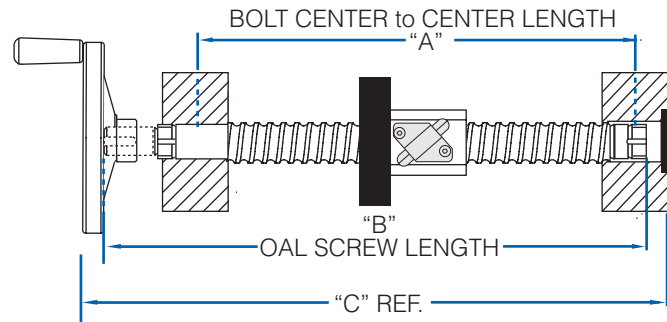
Use the reference number below to select the assembly that meets the design requirement. See page 214-218 for EZZE-MOUNT™ information, page 212-213 for End Machining information and page 287 for HandWheel information.

EXAMPLE:

0631-0200 SRT RH / EQ / CN / 24.5 / SBN10325 / FS

Is a 0631-0200 SRT right hand alloy steel rolled screw with an SBN0827 ball nut Universal Double and Universal Single EZZE-MOUNT™ overall length of 24.50", with HandWheel 4" diameter.

Note: Ball nut direction must be specified at the time of order.



NOTE: "A" & "B" Dimensions reflect a 1/2" over travel at each end.

SCREW DIA.	LEAD	ADD MEASUREMENT BELOW + TRAVEL			REFERENCE NUMBER	HANDWHEEL		PAGE
		BOLT CENTER "A"	O.A.L "B"	"C" REF.		SIZE	PART NO.	
0631-0200	0.200	4.09"	7.14"	7.88"	0631-0200 SRT RH / EQ / CN / "B" / SBN10325 / FS	4"	HO43*	102
0631-0500	0.500	4.09"	7.14"	7.88"	0631-0500 SRT RH / EQ / CN / "B" / SBN10113 / FS	4"	HO43*	106
0750-0200	0.200	4.25"	7.23"	7.94"	0750-0200 SRT RH / EQ / CN / "B" / SBN7201 / FS	4"	HO44	107
0750-0500	0.500	5.31"	8.28"	8.99"	0750-0500 SRT RH / EQ / CN / "B" / SBN7500 / FS	4"	HO44	109
0875-0200	0.200	5.38"	8.65"	9.48"	0875-0200 SRT RH / EQ / CN / "B" / SBN8277 / FS	6"	HO64	110
1000-0250	0.250	5.08"	9.00"	9.86"	1000-0250 SRT RH / EQ / CN / "B" / SBN7508 / FS	6"	HO65**	113
1000-0500	0.500	5.85"	9.77"	10.63"	1000-0500 SRT RH / EQ / CN / "B" / SBN1050 / FS	6"	HO65**	116
1000-1000	1.000	5.72"	9.64"	10.50"	1000-1000 SRT RH / EQ / CN / "B" / SBN7509 / FS	6"	HO65**	117
1150-0200	0.200	5.44"	9.59"	10.64"	1150-0200 SRT RH / EQ / CN / "B" / SBN1566 / FS	8"	HO86	118
1250-0200	0.200	6.23"	10.38"	11.43"	1250-0200 SRT RH / EQ / CN / "B" / SBN10627 / FS	8"	HO86	121
1250-0500	0.500	6.52"	10.67"	11.72"	1250-0500 SRT RH / EQ / CN / "B" / SBN10104 / FS	8"	HO86	123
1500-0250	0.250	5.81"	10.41"	11.43"	1500-0250 SRT RH / EQ / CN / "B" / SBN9587 / FS	8"	HO88	126
1500-0473	0.413	7.25"	11.40"	12.46"	1500-0473 SRT RH / EQ / CN / "B" / SBN7513 / FS	8"	HO86	128
1500-0500	0.500	8.53"	12.68"	13.73"	1500-0500 SRT RH / EQ / CN / "B" / SBN1550 / FS	8"	HO86	129
1500-1000	1.000	6.57"	10.72"	11.77"	1500-1000 SRT RH / EQ / CN / "B" / SBN8280 / FS	8"	HO86	131
1500-1875	1.875	7.94"	12.54"	13.55"	1500-1875 SRT RH / EQ / CN / "B" / SBN7654 / FS	8"	HO88	132

*Indicates modified Type III End Machining required.

**HO65 HandWheel has the same outer dimensions as HO64, but different bore.

Other combinations of screw assemblies and handwheels available upon request.