

**105 – RA / EK / 4N / 41.87 / 20105 / FS**

**ACME SCREW**

**Thread Form Codes**

025 = 1/4"-3	044 = 7/16"-4	070 = 3/4"-10	150 = 1-1/2"-10
024 = 1/4"-4	051 = 1/2"-1	086 = 7/8"-6	174 = 1-3/4"-4
026 = 1/4"-16	052 = 1/2"-2	111 = 1"-1	202 = 2"-2
020 = 1/4"-20	054 = 1/2"-4	112 = 1"-2	204 = 2"-4
022 = 5/16"-2	055 = 1/2"-5	104 = 1"-4	205 = 2"-5
028 = 5/16"-4	050 = 1/2"-10	105 = 1"-5	222 = 2-1/4"-2
031 = 3/8"-1	063 = 5/8"-2-2/3	106 = 1"-6	224 = 2-1/4"-4
037 = 3/8"-2	065 = 5/8"-5	110 = 1"-10	252 = 2-1/2"-2
034 = 3/8"-4	652 = 5/8"-5(2)	115 = 1-1/8"-5	253 = 2-1/2"-3
035 = 3/8"-5	068 = 5/8"-8	124 = 1-1/4"-4	254 = 2-1/2"-4
036 = 3/8"-6	060 = 5/8"-10	125 = 1-1/4"-5	302 = 3"-2
038 = 3/8"-8	072 = 3/4"-2	152 = 1-1/2"-2	332 = 3-3/8"-1-1/2
030 = 3/8"-10	073 = 3/4"-3	153 = 1-1/2"-2-2/3	372 = 3-3/4"-1-1/2
032 = 3/8"-12	075 = 3/4"-5	154 = 1-1/2"-4	452 = 4-1/2"-1-1/2
033 = 3/8"-16	076 = 3/4"-6	155 = 1-1/2"-5	552 = 5"-1-1/2
042 = 7/16"-2			602 = 6"-1-1/2

**MATERIAL**

**RA**

R = Right Hand Thread  
L = Left Hand Thread

A = Alloy Steel, Rolled  
B = Alloy Steel, Milled  
C = Alloy Steel, Ground  
S = Stainless Steel, Rolled  
T = Stainless Steel, Milled  
U = Stainless Steel, Ground

**NOTE:**

Not all threads/materials are available for all sizes.

**FIRST END CONFIGURATION**

**EZZE-MOUNT™ / End Machining**

(see page 214 & 212)

1 = Type 1      3 = Type 3  
2 = Type 2      4 = Type 4

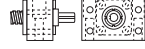
**EK**

EK = Universal Double Bearing Support, with Keyway

**Shaft Extension**

(see page 212)

B = Universal Double Bearing Support End Cap Facing Screw Thread



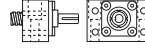
C = Universal Single Bearing Support



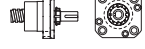
D = Flanged Single Bearing Support Flange Facing Screw Thread



E = Universal Double Bearing Support End Cap Facing Away From Screw Thread



F = Flanged Double Bearing Support Flange Facing Screw Thread



G = Flanged Single Bearing Support Flange Facing Away From Screw Thread



H = Flanged Double Bearing Support Flange Facing Away From Screw Thread



U\_ = Universal Double Bearing Support with Motor Mount (see page 217)



Y\_ = Flanged Double Bearing Support with Motor Mount (see page 218)



00 = No End Machining (Screw will be cut to desired length).

XX = Custom Machining (Print or specified data must be provided).

K = Shaft Extension with Keyway

L = Shaft Extension without Keyway

Q = HandWheel

N = No Shaft Extension

**NOTE:** Both Ends must be specified.

Single Bearing Supports are used in conjunction with Type 1N end machining.

Double Bearing Supports are used in conjunction with Type 3K, 3L, or 3N end machining.

**SECOND END CONFIGURATION**

Refer to the First End Configuration.

**NOTE:** Both Ends must be specified.

**OVER - ALL - LENGTH (OAL)**

Length in inches, 2 place decimal.

**ACME NUT**

Nut will be installed with flange or threaded end toward first end designation. 00000 = No Nut

**MODIFIER LIST**

**F Optional**

F = Round Flange

**S or M Required**

S = Standard, no additional description required

M = Modified, additional description required