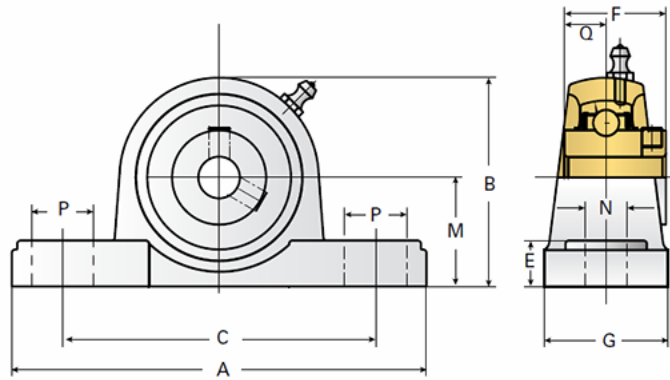


EZCP208-24

Call 800-321-7800 or visit us online at www.nookindustries.com to configure and order your EZCP208-24 today!



Details

Bore Diameter [in] 1.50

Dimensions

A [mm] 184
 B [mm] 100
 C [mm] 137
 E [mm] 19
 F [mm] 49.2
 G [mm] 54
 M [mm] 49.2
 N [mm] 17
 P [mm] 21
 Q [mm] 19

Product Compatibility Selection

BSJ -
 MSJ 15-MSJ
 SS-MSJ 15SS-MSJ
 EM-BSJ -
 EM-MSJ -
 Bevel -
 Link Shafting LJ/LJK-24