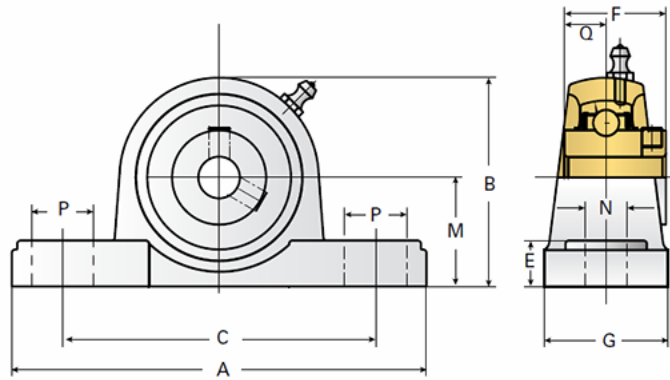


EZCP206-20

Call 800-321-7800 or visit us online at www.nookindustries.com to configure and order your EZCP206-20 today!



Details

Bore Diameter [in]	1.25
--------------------	------

Dimensions

A [mm]	165
B [mm]	83
C [mm]	121
E [mm]	18
F [mm]	38.1
G [mm]	48
M [mm]	42.9
N [mm]	17
P [mm]	21
Q [mm]	15.9

Product Compatibility Selection

BSJ	-
MSJ	10-MSJ
SS-MSJ	10SS-MSJ
EM-BSJ	-
EM-MSJ	-
Bevel	-
Link Shafting	-