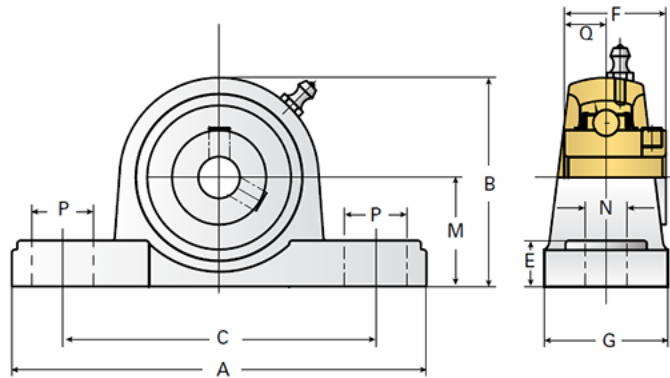


EZCP205-16

Call 800-321-7800 or visit us online at www.nookindustries.com to configure and order your EZCP205-16 today!



Details

Bore Diameter [in] 1.00

Dimensions

A [mm] 140
 B [mm] 70
 C [mm] 105
 E [mm] 16
 F [mm] 34
 G [mm] 38
 M [mm] 36.6
 N [mm] 13
 P [mm] 19
 Q [mm] 14.3

Product Compatibility Selection

BSJ -
 MSJ 5-MSJ
 SS-MSJ 5SS-MSJ
 EM-BSJ -
 EM-MSJ -
 Bevel -
 Link Shafting LJ/LJK-16