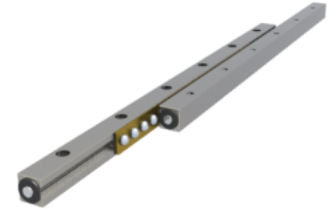
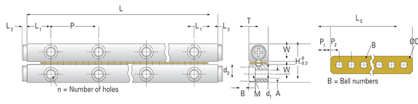


GBV12 - 600

Call 800-321-7800 or visit us online at www.nookindustries.com to configure and order your GBV12 - 600 today!



Product Info

Part Number GBV12 - 600
Max Stroke [mm] 496

Material Specification

Rail SUJ2
Roller SUJ2
Retainer Phosphor Bronze C5191

Dimensions

H [mm] 58
T [mm] 28
W [mm] 26.9
L [mm] 600
n [mm] 12
P [mm] 100
L1 [mm] 50
L2 [mm] 3.5
ØD [mm] Ø12
L3 [mm] 365
R [mm] 18
P1 [mm] 12.5
P2 [mm] 20
A [mm] 12
M M10
d1 [mm] 8.5
d2 [mm] 13.5
B [mm] 8.2

Performance Specifications

Dynamic C [N] 300
Static C0 [N] 1320
Capacity Per Bearing [N] 440

Weight

Per Rail [g] 6201