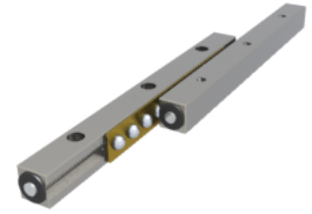
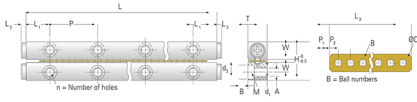


## GBV12 - 300

Call 800-321-7800 or visit us online at [www.nookindustries.com](http://www.nookindustries.com) to configure and order your GBV12 - 300 today!



### Product Info

Part Number GBV12 - 300  
Max Stroke [mm] 216

### Material Specification

Rail SUJ2  
Roller SUJ2  
Retainer Phosphor Bronze C5191

### Dimensions

H [mm] 58  
T [mm] 28  
W [mm] 26.9  
L [mm] 300  
n [mm] 6  
P [mm] 100  
L1 [mm] 50  
L2 [mm] 3.5  
ØD [mm] Ø12  
L3 [mm] 205  
R [mm] 10  
P1 [mm] 12.5  
P2 [mm] 20  
A [mm] 12  
M M10  
d1 [mm] 8.5  
d2 [mm] 13.5  
B [mm] 8.2

### Performance Specifications

Dynamic C [N] 300  
Static C0 [N] 1320  
Capacity Per Bearing [N] 440

### Weight

Per Rail [g] 3122