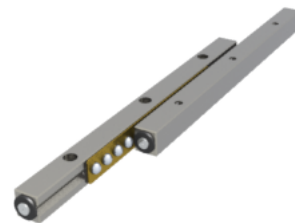
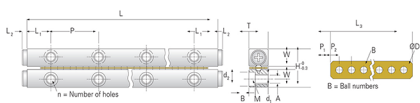


GBV09 - 300

Call 800-321-7800 or visit us online at www.nookindustries.com to configure and order your GBV09 - 300 today!



Product Info	
Part Number	GBV09 - 300
Max Stroke [mm]	246
Material Specification	
Rail	SUJ2
Roller	SUJ2
Retainer	Phosphor Bronze C5191
Dimensions	
H [mm]	44
T [mm]	22
W [mm]	20.2
L [mm]	300
n [mm]	6
P [mm]	100
L1 [mm]	50
L2 [mm]	3.5
ØD [mm]	Ø9
L3 [mm]	185
R [mm]	12
P1 [mm]	8.5
P2 [mm]	14
A [mm]	9
M	M8
d1 [mm]	6.8
d2 [mm]	10.5
B [mm]	6.2
Performance Specifications	
Dynamic C [N]	207
Static C0 [N]	750
Capacity Per Bearing [N]	250
Weight	
Per Rail [g]	1871