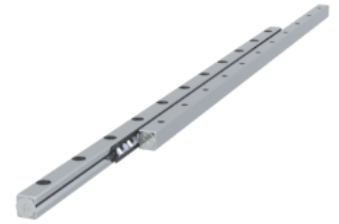


GRVP06 - 550 - S

Call 800-321-7800 or visit us online at www.nookindustries.com to configure and order your GRVP06 - 550 - S today!



| | |
|-----------------------------------|------------------|
| Product Info | |
| Part Number | GRVP06 - 550 - S |
| Max Stroke [mm] | 458 |
| Material Specification | |
| Rail | SUS440C + Ni |
| Roller | 100Cr6 |
| Retainer | POM Plastic |
| Dimensions | |
| H [mm] | 31 |
| T [mm] | 15 |
| W [mm] | 14 |
| L [mm] | 550 |
| n [mm] | 22 |
| P [mm] | 50 |
| L1 [mm] | 25 |
| L2 [mm] | 2 |
| ØD [mm] | 6 |
| L3 [mm] | 326.5 |
| R [mm] | 36 |
| P1 [mm] | 5.4 |
| P2 [mm] | 9 |
| A [mm] | 6 |
| M | M6 |
| d1 [mm] | 5.3 |
| d2 [mm] | 9.5 |
| B [mm] | 5.2 |
| Performance Specifications | |
| Dynamic C [N] | 2570 |
| Static C0 [N] | 2632 |
| Capacity Per Bearing [N] | 877 |
| Weight | |
| Per Rail [g] | 1691 |