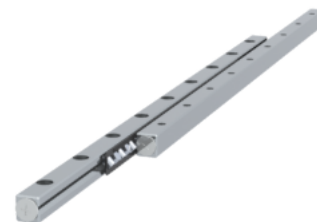


GRVP06 - 450 - S

Call 800-321-7800 or visit us online at www.nookindustries.com to configure and order your GRVP06 - 450 - S today!



Product Info

Part Number GRVP06 - 450 - S
Max Stroke [mm] 366

Material Specification

Rail SUS440C + Ni
Roller 100Cr6
Retainer POM Plastic

Dimensions

H [mm] 31
T [mm] 15
W [mm] 14
L [mm] 450
n [mm] 18
P [mm] 50
L1 [mm] 25
L2 [mm] 2
ØD [mm] 6
L3 [mm] 272.5
R [mm] 30
P1 [mm] 5.4
P2 [mm] 9
A [mm] 6
M M6
d1 [mm] 5.3
d2 [mm] 9.5
B [mm] 5.2

Performance Specifications

Dynamic C [N] 2570
Static C0 [N] 2632
Capacity Per Bearing [N] 877

Weight

Per Rail [g] 1385