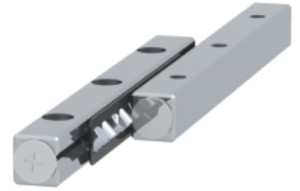


GRVP06 - 150 - S

Call 800-321-7800 or visit us online at www.nookindustries.com to configure and order your GRVP06 - 150 - S today!



Product Info	
Part Number	GRVP06 - 150 - S
Max Stroke [mm]	108
Material Specification	
Rail	SUS440C + Ni
Roller	100Cr6
Retainer	POM Plastic
Dimensions	
H [mm]	31
T [mm]	15
W [mm]	14
L [mm]	150
n [mm]	6
P [mm]	50
L1 [mm]	25
L2 [mm]	2
ØD [mm]	6
L3 [mm]	100.8
R [mm]	11
P1 [mm]	5.4
P2 [mm]	9
A [mm]	6
M	M6
d1 [mm]	5.3
d2 [mm]	9.5
B [mm]	5.2
Performance Specifications	
Dynamic C [N]	2570
Static C0 [N]	2632
Capacity Per Bearing [N]	877
Weight	
Per Rail [g]	466