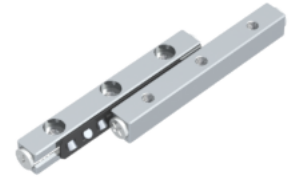
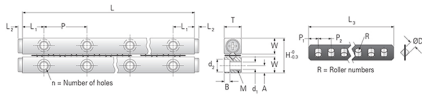


GRVP02 - 45 - S

Call 800-321-7800 or visit us online at www.nookindustries.com to configure and order your GRVP02 - 45 - S today!



Product Info	
Part Number	GRVP02 - 45 - S
Max Stroke [mm]	30
Material Specification	
Rail	SUS440C + Ni
Roller	100Cr6
Retainer	POM Plastic
Dimensions	
H [mm]	12
T [mm]	6
W [mm]	5.5
L [mm]	45
n [mm]	6
P [mm]	15
L1 [mm]	7.5
L2 [mm]	1.5
ØD [mm]	2
L3 [mm]	30.5
R [mm]	8
P1 [mm]	2.8
P2 [mm]	4
A [mm]	2.5
M	M3
d1 [mm]	2.55
d2 [mm]	4.4
B [mm]	2
Performance Specifications	
Dynamic C [N]	293
Static C0 [N]	292
Capacity Per Bearing [N]	97
Weight	
Per Rail [g]	21