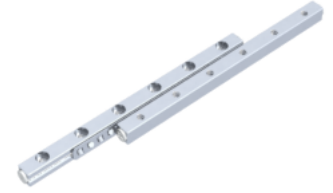


## GRV02 - 90 - S

Call 800-321-7800 or visit us online at [www.nookindustries.com](http://www.nookindustries.com) to configure and order your GRV02 - 90 - S today!



### Product Info

Part Number GRV02 - 90 - S  
Max Stroke [mm] 72

### Material Specification

Rail SUS440C + Ni  
Roller 100Cr6  
Retainer SUS304

### Dimensions

H [mm] 12  
T [mm] 6  
W [mm] 5.5  
L [mm] 90  
n [mm] 12  
P [mm] 15  
L1 [mm] 7.5  
L2 [mm] 0.8  
ØD [mm] 2  
L3 [mm] 57.6  
R [mm] 14  
P1 [mm] 2.8  
P2 [mm] 4  
A [mm] 2.5  
M M3  
d1 [mm] 2.55  
d2 [mm] 4.4  
B [mm] 2

### Performance Specifications

Dynamic C [N] 293  
Static C0 [N] 292  
Capacity Per Bearing [N] 97

### Weight

Per Rail [g] 42