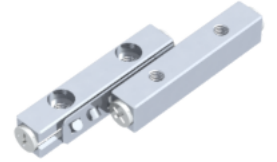


GRV02 - 30 - S

Call 800-321-7800 or visit us online at www.nookindustries.com to configure and order your GRV02 - 30 - S today!



Product Info

Part Number GRV02 - 30 - S
Max Stroke [mm] 24

Material Specification

Rail SUS440C + Ni
Roller 100Cr6
Retainer SUS304

Dimensions

H [mm] 12
T [mm] 6
W [mm] 5.5
L [mm] 30
n [mm] 4
P [mm] 15
L1 [mm] 7.5
L2 [mm] 0.8
ØD [mm] 2
L3 [mm] 21.6
R [mm] 5
P1 [mm] 2.8
P2 [mm] 4
A [mm] 2.5
M M3
d1 [mm] 2.55
d2 [mm] 4.4
B [mm] 2

Performance Specifications

Dynamic C [N] 293
Static C0 [N] 292
Capacity Per Bearing [N] 97

Weight

Per Rail [g] 14