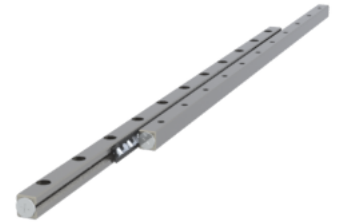


## GRVP06 - 550

Call 800-321-7800 or visit us online at [www.nookindustries.com](http://www.nookindustries.com) to configure and order your GRVP06 - 550 today!



<b>Product Info</b>	
Part Number	GRVP06 - 550
Max Stroke [mm]	458
<b>Material Specification</b>	
Rail	SUJ2
Roller	SUJ2
Retainer	POM Plastic
<b>Dimensions</b>	
H [mm]	31
T [mm]	15
W [mm]	14
L [mm]	550
n [mm]	22
P [mm]	50
L1 [mm]	25
L2 [mm]	2
ØD [mm]	6
L3 [mm]	326.5
R [mm]	36
P1 [mm]	5.4
P2 [mm]	9
A [mm]	6
M	M6
d1 [mm]	5.3
d2 [mm]	9.5
B [mm]	5.2
<b>Performance Specifications</b>	
Dynamic C [N]	2570
Static C0 [N]	2632
Capacity Per Bearing [N]	877
<b>Weight</b>	
Per Rail [g]	1579