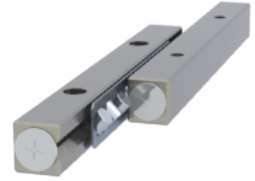


GRV09 - 200

Call 800-321-7800 or visit us online at www.nookindustries.com to configure and order your GRV09 - 200 today!



Product Info	
Part Number	GRV09 - 200
Max Stroke [mm]	158
Material Specification	
Rail	SUJ2
Roller	SUJ2
Retainer	SUS304
Dimensions	
H [mm]	44
T [mm]	22
W [mm]	20.2
L [mm]	200
n [mm]	4
P [mm]	100
L1 [mm]	50
L2 [mm]	1
ØD [mm]	9
L3 [mm]	130
R [mm]	9
P1 [mm]	9
P2 [mm]	14
A [mm]	9
M	M8
d1 [mm]	6.8
d2 [mm]	10.5
B [mm]	6.2
Performance Specifications	
Dynamic C [N]	7190
Static C0 [N]	2774
Capacity Per Bearing [N]	2425
Weight	
Per Rail [g]	1267