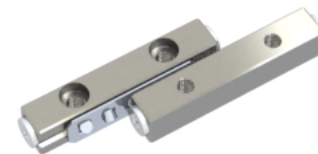
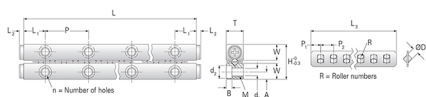


## GRV02 - 30

Call 800-321-7800 or visit us online at [www.nookindustries.com](http://www.nookindustries.com) to configure and order your GRV02 - 30 today!



<b>Product Info</b>	
Part Number	GRV02 - 30
Max Stroke [mm]	24
<b>Material Specification</b>	
Rail	SUJ2
Roller	SUJ2
Retainer	SUS304
<b>Dimensions</b>	
H [mm]	12
T [mm]	6
W [mm]	5.5
L [mm]	30
n [mm]	4
P [mm]	15
L1 [mm]	7.5
L2 [mm]	0.8
ØD [mm]	2
L3 [mm]	21.6
R [mm]	5
P1 [mm]	2.8
P2 [mm]	4
A [mm]	2.5
M	M3
d1 [mm]	2.55
d2 [mm]	4.4
B [mm]	2
<b>Performance Specifications</b>	
Dynamic C [N]	293
Static C0 [N]	292
Capacity Per Bearing [N]	97
<b>Weight</b>	
Per Rail [g]	13