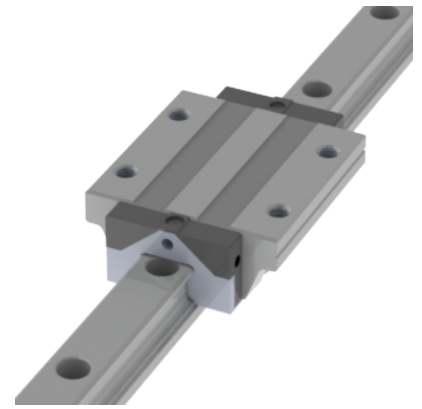
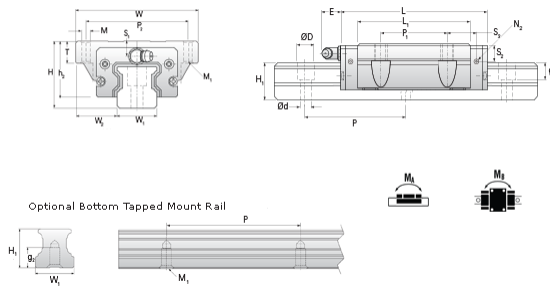


NHRC 30 FL Assembly

Call 800-321-7800 or visit us online at www.nookindustries.com to configure and order your NHRC 30 FL Assembly today!



Dimensions	
H [mm]	42
W2 [mm]	31
Long Caged Ball Block Four Mounting Holes	
Details	
Size [mm]	30
Dimensions	
W [mm]	90
L [mm]	148
L1 [mm]	94
h2 [mm]	35.2
P1 [mm]	52
P2 [mm]	72
M1 [mm]	M8 Thru Bolt
M x g2	M10 x 15
T [mm]	16
N1	M6 x 8.5
N2	M6 x 5
N3 [O-Ring Seal]	P5
E [mm]	12
S1 [mm]	7.5
S2 [mm]	12
S3 [mm]	25.7
S4 [mm]	25.8
Forces and Torques	
Basic Load Ratings C [kN]	39.6
Basic Load Ratings C0 [kN]	70.2
Static Moment Ratings-Ma [N-m]	950.0
Static Moment Ratings-Mb [N-m]	950.0
Static Moment Ratings-Mc [N-m]	1105.0
Weight	
Weight-Block [g]	1385
Caged Ball Rail Top Mount	
Details	
Size [mm]	30
Dimensions	
W1 [mm]	28
H1 [mm]	27
P [mm]	80
D [mm]	14
d1 [mm]	9
g1 [mm]	12
Weight	
Weights-Rail [g/m]	4380.0
Caged Ball Rail Bottom Tapped Mount	
Details	
Size [mm]	30
Dimensions	
W1 [mm]	28
H1 [mm]	27
P [mm]	80
M x g3	M8 x 15
Weight	
Weights-Rail [g/m]	4380.0