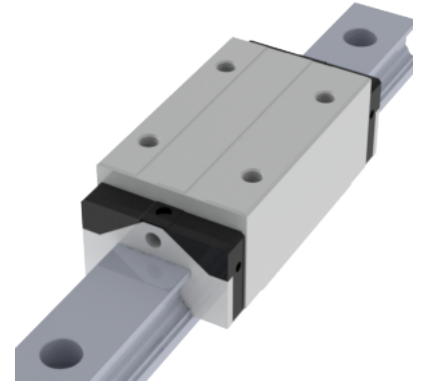
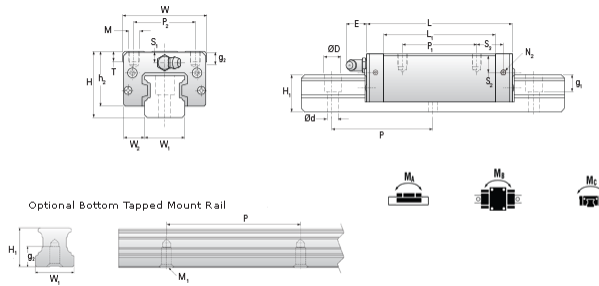


NHRC 45 ML Assembly

Call 800-321-7800 or visit us online at www.nookindustries.com to configure and order your NHRC 45 ML Assembly today!



| | |
|--|--------------|
| Dimensions | |
| H [mm] | 70 |
| W2 [mm] | 20.5 |
| Long Caged Ball Block Four Mounting Holes | |
| Details | |
| Size [mm] | 45 |
| Dimensions | |
| W [mm] | 86 |
| L [mm] | 171.5 |
| L1 [mm] | 138.5 |
| h2 [mm] | 60.7 |
| P1 [mm] | 80 |
| P2 [mm] | 60 |
| M1 [mm] | — |
| M x g2 | M10 x 20 |
| T [mm] | 14 |
| N1 | PT1/8 x 12.5 |
| N2 | M6 x 10.5 |
| N3 [O-Ring Seal] | P5 |
| E [mm] | 14 |
| S1 [mm] | 21.1 |
| S2 [mm] | 28.1 |
| S3 [mm] | 35 |
| S4 [mm] | 35 |
| Forces and Torques | |
| Basic Load Ratings C [kN] | 89.5 |
| Basic Load Ratings C0 [kN] | 169.1 |
| Static Moment Ratings-Ma [N-m] | 3460.0 |
| Static Moment Ratings-Mb [N-m] | 3460.0 |
| Static Moment Ratings-Mc [N-m] | 4430.0 |
| Weight | |
| Weight-Block [g] | 4060 |
| Caged Ball Rail Top Mount | |
| Details | |
| Size [mm] | 45 |
| Dimensions | |
| W1 [mm] | 45 |
| H1 [mm] | 39 |
| P [mm] | 105 |
| D [mm] | 20 |
| d1 [mm] | 14 |
| g1 [mm] | 17 |
| Weight | |
| Weights-Rail [g/m] | 10530.0 |
| Caged Ball Rail Bottom Tapped Mount | |
| Details | |
| Size [mm] | 45 |
| Dimensions | |
| W1 [mm] | 45 |
| H1 [mm] | 39 |
| P [mm] | 105 |
| M x g3 | M12 x 19 |
| Weight | |
| Weights-Rail [g/m] | 10530.0 |