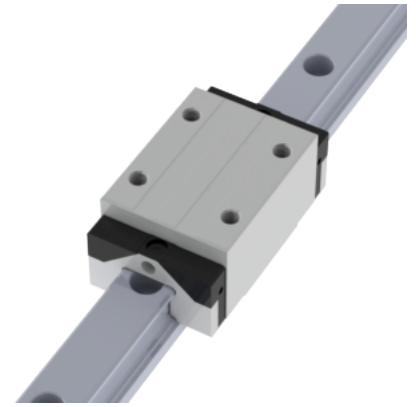
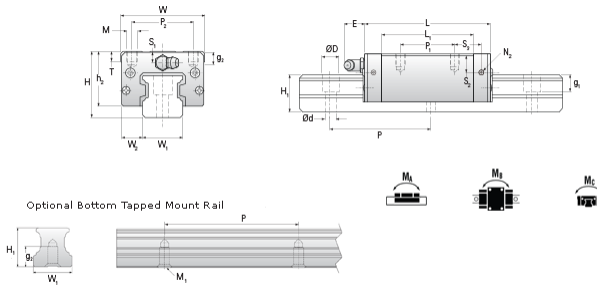


NHRC 25 MN Assembly

Call 800-321-7800 or visit us online at www.nookindustries.com to configure and order your NHRC 25 MN Assembly today!



Dimensions	
H [mm]	40
W2 [mm]	12.5
Standard Caged Ball Block Four Mounting Holes	
Details	
Size [mm]	25
Dimensions	
W [mm]	48
L [mm]	81.2
L1 [mm]	62.2
h2 [mm]	34
P1 [mm]	35
P2 [mm]	35
M1 [mm]	—
M x g2	M6 x 9
T [mm]	12
N1	M6 x 7.5
N2	M3 x 6.5
N3 [O-Ring Seal]	P4
E [mm]	12
S1 [mm]	12
S2 [mm]	16.3
S3 [mm]	16.6
S4 [mm]	17.6
Forces and Torques	
Basic Load Ratings C [kN]	24.8
Basic Load Ratings C0 [kN]	42.5
Static Moment Ratings-Ma [N-m]	385.0
Static Moment Ratings-Mb [N-m]	385.0
Static Moment Ratings-Mc [N-m]	540.0
Weight	
Weight-Block [g]	578
Caged Ball Rail Top Mount	
Details	
Size [mm]	25
Dimensions	
W1 [mm]	23
H1 [mm]	23
P [mm]	60
D [mm]	11
d1 [mm]	7
g1 [mm]	9
Weight	
Weights-Rail [g/m]	3020.0
Caged Ball Rail Bottom Tapped Mount	
Details	
Size [mm]	25
Dimensions	
W1 [mm]	23
H1 [mm]	23
P [mm]	60
M x g3	M6 x 12
Weight	
Weights-Rail [g/m]	3020.0