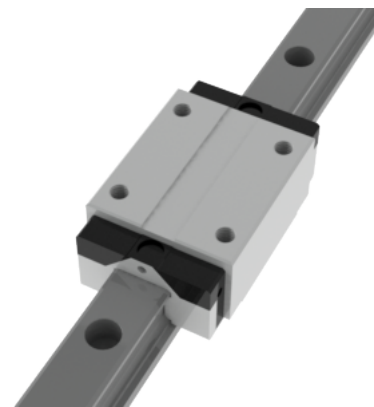


## NHRC 20 MN Assembly

Call 800-321-7800 or visit us online at [www.nookindustries.com](http://www.nookindustries.com) to configure and order your NHRC 20 MN Assembly today!



|  |          |
|--|----------|
| <b>Dimensions</b>                                    |          |
| H [mm]   | 30       |
| W2 [mm]  | 12       |
| <b>Standard Caged Ball Block Four Mounting Holes</b> |          |
| <b>Details</b>                                       |          |
| Size [mm]  | 20       |
| <b>Dimensions</b>                                    |          |
| W [mm]   | 44       |
| L [mm]   | 70.2     |
| L1 [mm]  | 52       |
| h2 [mm]  | 24.5     |
| P1 [mm]  | 36       |
| P2 [mm]  | 32       |
| M1 [mm]  | —        |
| M x g2   | M5 x 8.5 |
| T [mm]   | 8        |
| N1   | M3 x 7.5 |
| N2   | M3 x 5.5 |
| N3 [O-Ring Seal]                                     | P4       |
| E [mm]   | 10       |
| S1 [mm]  | 6        |
| S2 [mm]  | 9.4      |
| S3 [mm]  | 11       |
| S4 [mm]  | 11.7     |
| <b>Forces and Torques</b>                            |          |
| Basic Load Ratings C [kN]                            | 17.1     |
| Basic Load Ratings C0 [kN]                           | 30       |
| Static Moment Ratings-Ma [N-m]                       | 230.0    |
| Static Moment Ratings-Mb [N-m]                       | 230.0    |
| Static Moment Ratings-Mc [N-m]                       | 325.0    |
| <b>Weight</b>  |          |
| Weight-Block [g]                                     | 318      |
| <b>Caged Ball Rail Top Mount</b>                     |          |
| <b>Details</b>                                       |          |
| Size [mm]  | 20       |
| <b>Dimensions</b>                                    |          |
| W1 [mm]  | 20       |
| H1 [mm]  | 20       |
| P [mm]   | 60       |
| D [mm]   | 9.5      |
| d1 [mm]  | 6        |
| g1 [mm]  | 8.5      |
| <b>Weight</b>  |          |
| Weights-Rail [g/m]                                   | 2280.0   |
| <b>Caged Ball Rail Bottom Tapped Mount</b>           |          |
| <b>Details</b>                                       |          |
| Size [mm]  | 20       |
| <b>Dimensions</b>                                    |          |
| W1 [mm]  | 20       |
| H1 [mm]  | 20       |
| P [mm]   | 60       |
| M x g3   | M6 x 10  |
| <b>Weight</b>  |          |
| Weights-Rail [g/m]                                   | 2280.0   |