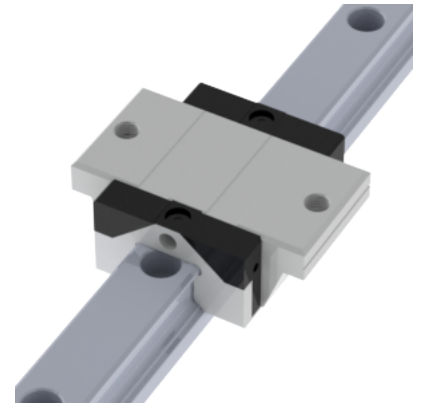
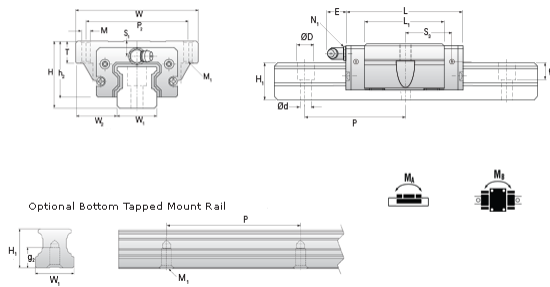


NARC 25 FS Assembly

Call 800-321-7800 or visit us online at www.nookindustries.com to configure and order your NARC 25 FS Assembly today!



Dimensions	
H [mm]	33
W2 [mm]	25
Short Caged Ball Block Two Perpendiculare Mounting Holes	
Details	
Size [mm]	25
Dimensions	
W [mm]	73
L [mm]	57.4
L1 [mm]	38.4
h2 [mm]	27
P2 [mm]	60
M1 [mm]	M6
M x g2	M8 x 12
T [mm]	12
N1	M6 x 7.5
N2	M3 x 6.5
N3 [O-Ring Seal]	P4
E [mm]	12
S1 [mm]	5
S2 [mm]	9.3
S3 [mm]	22.2
S4 [mm]	23.2
Forces and Torques	
Basic Load Ratings C [kN]	18.2
Basic Load Ratings C0 [kN]	27.3
Static Moment Ratings-Ma [N-m]	160.0
Static Moment Ratings-Mb [N-m]	160.0
Static Moment Ratings-Mc [N-m]	350.0
Weight	
Weight-Block [g]	345
Caged Ball Rail Top Mount	
Details	
Size [mm]	25
Dimensions	
W1 [mm]	23
H1 [mm]	23
P [mm]	60
D [mm]	11
d1 [mm]	7
g1 [mm]	9
Weight	
Weights-Rail [g/m]	3020.0
Caged Ball Rail Bottom Tapped Mount	
Details	
Size [mm]	25
Dimensions	
W1 [mm]	23
H1 [mm]	23
P [mm]	60
M x g3	M6 x 12
Weight	
Weights-Rail [g/m]	3020.0