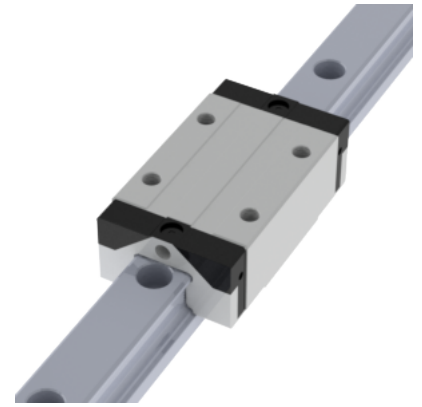
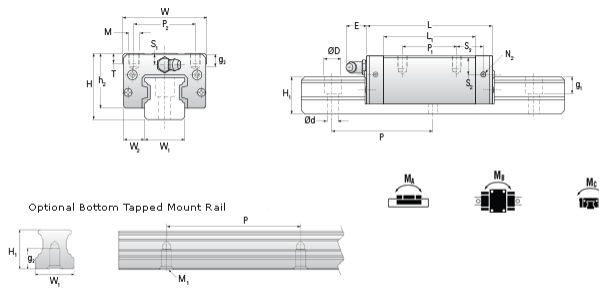


NARC 25 MN Assembly

Call 800-321-7800 or visit us online at www.nookindustries.com to configure and order your NARC 25 MN Assembly today!



| | |
|--|----------|
| Dimensions | |
| H [mm] | 33 |
| W2 [mm] | 12.5 |
| Standard Caged Ball Block Four Mounting Holes | |
| Details | |
| Size [mm] | 25 |
| Dimensions | |
| W [mm] | 48 |
| L [mm] | 81.2 |
| L1 [mm] | 62.2 |
| h2 [mm] | 27 |
| P1 [mm] | 35 |
| P2 [mm] | 35 |
| M1 [mm] | — |
| M x g2 | M6 x 9 |
| T [mm] | 8 |
| N1 | M6 x 7.5 |
| N2 | M3 x 6.5 |
| N3 [O-Ring Seal] | P4 |
| E [mm] | 12 |
| S1 [mm] | 5 |
| S2 [mm] | 9.3 |
| S3 [mm] | 16.6 |
| S4 [mm] | 17.6 |
| Forces and Torques | |
| Basic Load Ratings C [kN] | 24.8 |
| Basic Load Ratings C0 [kN] | 42.5 |
| Static Moment Ratings-Ma [N-m] | 385.0 |
| Static Moment Ratings-Mb [N-m] | 385.0 |
| Static Moment Ratings-Mc [N-m] | 540.0 |
| Weight | |
| Weight-Block [g] | 420 |
| Caged Ball Rail Top Mount | |
| Details | |
| Size [mm] | 25 |
| Dimensions | |
| W1 [mm] | 23 |
| H1 [mm] | 23 |
| P [mm] | 60 |
| D [mm] | 11 |
| d1 [mm] | 7 |
| g1 [mm] | 9 |
| Weight | |
| Weights-Rail [g/m] | 3020.0 |
| Caged Ball Rail Bottom Tapped Mount | |
| Details | |
| Size [mm] | 25 |
| Dimensions | |
| W1 [mm] | 23 |
| H1 [mm] | 23 |
| P [mm] | 60 |
| M x g3 | M6 x 12 |
| Weight | |
| Weights-Rail [g/m] | 3020.0 |