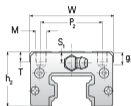
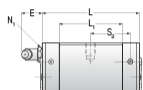
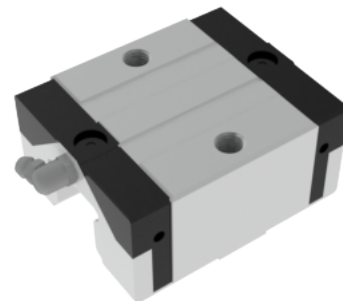


NARC 25 MS

Call 800-321-7800 or visit us online at www.nookindustries.com to configure and order your NARC 25 MS today!



Details

Size [mm] 25

Dimensions

W [mm] 48
 L [mm] 57.4
 L1 [mm] 38.4
 h2 [mm] 27
 P2 [mm] 35
 M1 [mm] -
 M x g2 M6 x 9
 T [mm] 8
 N1 M6 x 7.5
 N2 M3 x 6.5
 N3 [O-Ring Seal] P4
 E [mm] 12
 S1 [mm] 5
 S2 [mm] 9.3
 S3 [mm] 22.2
 S4 [mm] 23.2

Forces and Torques

Basic Load Ratings C [kN] 18.2
 Basic Load Ratings C0 [kN] 27.3
 Static Moment Ratings-Ma [N-m] 160.0
 Static Moment Ratings-Mb [N-m] 160.0
 Static Moment Ratings-Mc [N-m] 350.0

Weight

Weight-Block [g] 300