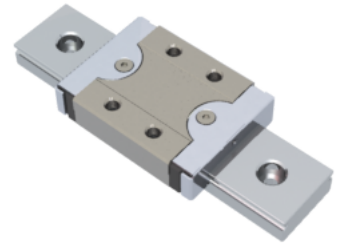


## NMR 9WN ZUE Assembly

Call 800-321-7800 or visit us online at [www.nookindustries.com](http://www.nookindustries.com) to configure and order your NMR 9WN ZUE Assembly today!



|   |          |
|---|----------|
| <b>Dimensions</b>   |          |
| H [mm]  | 12       |
| W2 [mm]   | 6        |
| <b>Wide Miniature Block Four Mounting Holes</b>           |          |
| <b>Details</b>  |          |
| Size [mm]   | 9        |
| <b>Dimensions</b>   |          |
| W [mm]  | 30       |
| L [mm]  | 40.2     |
| L1 [mm]   | 27.9     |
| h2 [mm]   | 9.4      |
| P1 [mm]   | 12       |
| P2 [mm]   | 21       |
| M x g2  | M3 x 3   |
| Ø [mm]  | 1.3      |
| S [mm]  | 2.6      |
| T [mm]  | 4        |
| <b>Forces and Torques</b>                                 |          |
| Basic Load Ratings C [N]                                  | 2030     |
| Basic Load Ratings C0 [N]                                 | 3605     |
| Static Moment Ratings-Ma [N-m]                            | 33.2     |
| Static Moment Ratings-Mb [N-m]                            | 13.7     |
| Static Moment Ratings-Mc [N-m]                            | 13.7     |
| <b>Weight</b>   |          |
| Weight-Block [g]  | 37       |
| <b>Wide Miniature Rail Top Mount Single Row</b>           |          |
| <b>Details</b>  |          |
| Size [mm]   | 9        |
| <b>Dimensions</b>   |          |
| H [mm]  | 12       |
| W1 [mm]   | 18       |
| H1 [mm]   | 7.3      |
| P [mm]  | 30       |
| D [mm]  | 6        |
| d1 [mm]   | 3.5      |
| g1 [mm]   | 3.5      |
| <b>Weight</b>   |          |
| Weights-Rail [g/m]  | 940.0    |
| <b>Wide Miniature Rail Bottom Tapped Mount Single Row</b> |          |
| <b>Details</b>  |          |
| Size [mm]   | 9        |
| <b>Dimensions</b>   |          |
| H1 [mm]   | 8.5      |
| W1 [mm]   | 24       |
| P [mm]  | 40       |
| M1  | M5 x 0.8 |
| <b>Weight</b>   |          |

