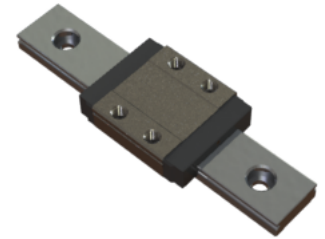


NMR 7WN SU Assembly

Call 800-321-7800 or visit us online at www.nookindustries.com to configure and order your NMR 7WN SU Assembly today!



| | |
|---|----------|
| Dimensions | |
| H [mm] | 9 |
| W2 [mm] | 5.5 |
| Wide Miniature Block Four Mounting Holes | |
| Details | |
| Size [mm] | 7 |
| Dimensions | |
| W [mm] | 25 |
| L [mm] | 31.6 |
| L1 [mm] | 21.2 |
| h2 [mm] | 7.2 |
| P1 [mm] | 10 |
| P2 [mm] | 19 |
| M x g2 | M3 x 3 |
| Ø [mm] | 1.1 |
| S [mm] | 1.9 |
| T [mm] | 3.2 |
| Forces and Torques | |
| Basic Load Ratings C [N] | 1180 |
| Basic Load Ratings C0 [N] | 2095 |
| Static Moment Ratings-Ma [N-m] | 7.3 |
| Static Moment Ratings-Mb [N-m] | 7.3 |
| Static Moment Ratings-Mc [N-m] | 15.0 |
| Weight | |
| Weight-Block [g] | 19 |
| Wide Miniature Rail Top Mount Single Row | |
| Details | |
| Size [mm] | 7 |
| Dimensions | |
| H [mm] | 9 |
| W1 [mm] | 14 |
| H1 [mm] | 5.2 |
| P [mm] | 30 |
| D [mm] | 5 |
| d1 [mm] | 3.5 |
| g1 [mm] | 3.5 |
| Weight | |
| Weights-Rail [g/m] | 516.0 |
| Wide Miniature Rail Bottom Tapped Mount Single Row | |
| Details | |
| Size [mm] | 7 |
| Dimensions | |
| H1 [mm] | 7.5 |
| W1 [mm] | 18 |
| P [mm] | 30 |
| M1 | M4 x 0.7 |
| Weight | |

