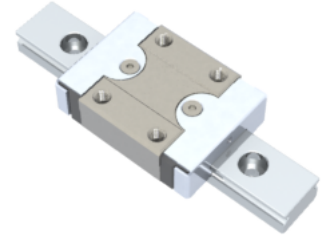


NMR 12MN EE Assembly

Call 800-321-7800 or visit us online at www.nookindustries.com to configure and order your NMR 12MN EE Assembly today!



| | |
|---|----------|
| Dimensions | |
| H [mm] | 13 |
| W ₂ [mm] | 7.5 |
| Standard Miniature Block Four Mounting Holes | |
| Details | |
| Size [mm] | 12 |
| Dimensions | |
| W [mm] | 27 |
| L [mm] | 36.8 |
| L ₁ [mm] | 22 |
| h ₂ [mm] | 10.7 |
| P ₁ [mm] | 15 |
| P ₂ [mm] | 20 |
| M × g ₂ | M3 × 3.5 |
| ∅ [mm] | 1.3 |
| S [mm] | 3.2 |
| T [mm] | 4.3 |
| Forces and Torques | |
| Basic Load Ratings C [N] | 2308 |
| Basic Load Ratings C0 [N] | 3465 |
| Static Moment Ratings-M _a [N-m] | 12.9 |
| Static Moment Ratings-M _b [N-m] | 12.9 |
| Static Moment Ratings-M _c [N-m] | 21.5 |
| Weight | |
| Weight-Block [g] | 34 |
| Standard Miniature Rail Top Mount | |
| Details | |
| Size [mm] | 12 |
| Dimensions | |
| H [mm] | 13 |
| W ₁ [mm] | 12 |
| H ₁ [mm] | 7.5 |
| P [mm] | 25 |
| D [mm] | 6 |
| d ₁ [mm] | 3.5 |
| g ₁ [mm] | 4.5 |
| Weight | |
| Weights-Rail [g/m] | 602.0 |
| Standard Miniature Rail Bottom Tapped Mount | |
| Details | |
| Size [mm] | 12 |
| Dimensions | |
| H ₁ [mm] | 7.5 |
| W ₁ [mm] | 12 |
| P [mm] | 25 |
| M ₁ | M4 × 0.7 |
| Weight | |

