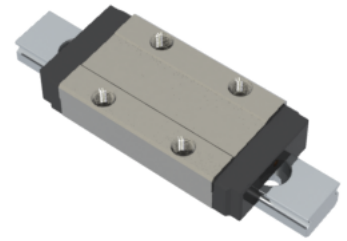


NMR 9ML ZZ Assembly

Call 800-321-7800 or visit us online at www.nookindustries.com to configure and order your NMR 9ML ZZ Assembly today!



| | |
|---|----------|
| Dimensions | |
| H [mm] | 10 |
| W2 [mm] | 5.5 |
| Standard Miniature Block Four Mounting Holes | |
| Details | |
| Size [mm] | 9 |
| Dimensions | |
| W [mm] | 20 |
| L [mm] | 40.9 |
| L1 [mm] | 30.8 |
| h2 [mm] | 7.8 |
| P1 [mm] | 16 |
| P2 [mm] | 15 |
| M x g2 | M3 x 3.0 |
| Ø [mm] | 1.3 |
| S [mm] | 2.2 |
| T [mm] | 3.3 |
| Forces and Torques | |
| Basic Load Ratings C [N] | 2135 |
| Basic Load Ratings C0 [N] | 3880 |
| Static Moment Ratings-Ma [N-m] | 12.4 |
| Static Moment Ratings-Mb [N-m] | 12.4 |
| Static Moment Ratings-Mc [N-m] | 18.2 |
| Weight | |
| Weight-Block [g] | 28 |
| Standard Miniature Rail Top Mount | |
| Details | |
| Size [mm] | 9 |
| Dimensions | |
| H [mm] | 10 |
| W1 [mm] | 9 |
| H1 [mm] | 5.5 |
| P [mm] | 20 |
| D [mm] | 6 |
| d1 [mm] | 3.5 |
| g1 [mm] | 3.5 |
| Weight | |
| Weights-Rail [g/m] | 301.0 |
| Standard Miniature Rail Bottom Tapped Mount | |
| Details | |
| Size [mm] | 9 |
| Dimensions | |
| H1 [mm] | 5.5 |
| W1 [mm] | 9 |
| P [mm] | 20 |
| M1 | M4 x 0.7 |
| Weight | |

