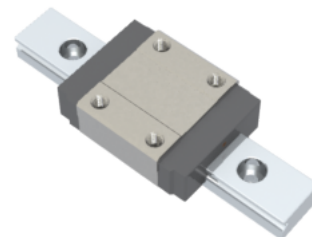


## NMR 12MN SU Assembly

Call 800-321-7800 or visit us online at [www.nookindustries.com](http://www.nookindustries.com) to configure and order your NMR 12MN SU Assembly today!



<b>Dimensions</b>	
H [mm]	13
W <sub>2</sub> [mm]	7.5
<b>Standard Miniature Block Four Mounting Holes</b>	
<b>Details</b>	
Size [mm]	12
<b>Dimensions</b>	
W [mm]	27
L [mm]	35.4
L <sub>1</sub> [mm]	22
h <sub>2</sub> [mm]	10.2
P <sub>1</sub> [mm]	15
P <sub>2</sub> [mm]	20
M × g <sub>2</sub>	M3 × 3.5
∅ [mm]	1.3
S [mm]	3.2
T [mm]	4.3
<b>Forces and Torques</b>	
Basic Load Ratings C [N]	2308
Basic Load Ratings C0 [N]	3465
Static Moment Ratings-M <sub>a</sub> [N-m]	12.9
Static Moment Ratings-M <sub>b</sub> [N-m]	12.9
Static Moment Ratings-M <sub>c</sub> [N-m]	21.5
<b>Weight</b>	
Weight-Block [g]	34
<b>Standard Miniature Rail Top Mount</b>	
<b>Details</b>	
Size [mm]	12
<b>Dimensions</b>	
H [mm]	13
W <sub>1</sub> [mm]	12
H <sub>1</sub> [mm]	7.5
P [mm]	25
D [mm]	6
d <sub>1</sub> [mm]	3.5
g <sub>1</sub> [mm]	4.5
<b>Weight</b>	
Weights-Rail [g/m]	602.0
<b>Standard Miniature Rail Bottom Tapped Mount</b>	
<b>Details</b>	
Size [mm]	12
<b>Dimensions</b>	
H <sub>1</sub> [mm]	7.5
W <sub>1</sub> [mm]	12
P [mm]	25
M <sub>1</sub>	M4 × 0.7
<b>Weight</b>	

