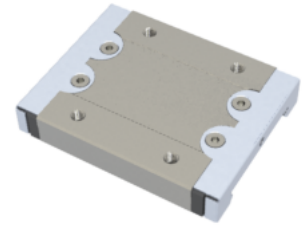
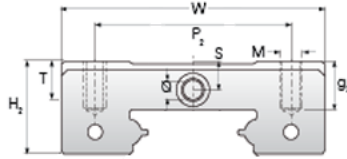


NMR 15WL EE

Call 800-321-7800 or visit us online at www.nookindustries.com to configure and order your NMR 15WL EE today!



Details	
Size [mm]	15
Dimensions	
W [mm]	60
L [mm]	76
L1 [mm]	57.6
h2 [mm]	12.8
P1 [mm]	35
P2 [mm]	45
M x g2	M4 x 4.5
Ø [mm]	1.8
S [mm]	3.3
T [mm]	4.5
Forces and Torques	
Basic Load Ratings C [N]	6725
Basic Load Ratings C0 [N]	12580
Static Moment Ratings-Ma [N-m]	257.6
Static Moment Ratings-Mb [N-m]	93.1
Static Moment Ratings-Mc [N-m]	93.1
Weight	
Weight-Block [g]	203