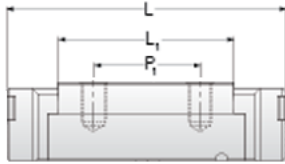
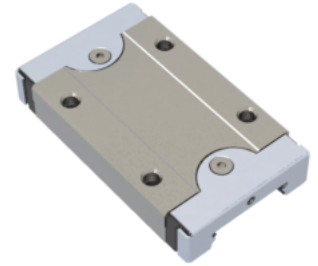


NMR 9WL ZUE

Call 800-321-7800 or visit us online at www.nookindustries.com to configure and order your NMR 9WL ZUE today!



Details

Size [mm] 9

Dimensions

W [mm] 30
 L [mm] 51.8
 L1 [mm] 39.5
 h2 [mm] 9.4
 P1 [mm] 24
 P2 [mm] 23
 M x g2 M3 x 3
 Ø [mm] 1.3
 S [mm] 2.6
 T [mm] 4

Forces and Torques

Basic Load Ratings C [N] 2550
 Basic Load Ratings C0 [N] 4990
 Static Moment Ratings-Ma [N-m] 45.9
 Static Moment Ratings-Mb [N-m] 26.7
 Static Moment Ratings-Mc [N-m] 26.7

Weight

Weight-Block [g] 51