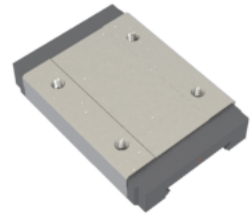


## NMR 12WL SS

Call 800-321-7800 or visit us online at [www.nookindustries.com](http://www.nookindustries.com) to configure and order your NMR 12WL SS today!



| <b>Details</b>                 |          |
|--------------------------------|----------|
| Size [mm]                      | 12       |
| <b>Dimensions</b>              |          |
| W [mm]                         | 40       |
| L [mm]                         | 59.4     |
| L1 [mm]                        | 46       |
| h2 [mm]                        | 10.1     |
| P1 [mm]                        | 28       |
| P2 [mm]                        | 28       |
| M x g2                         | M3 x 3.5 |
| Ø [mm]                         | 1.3      |
| S [mm]                         | 3.1      |
| T [mm]                         | 4.5      |
| <b>Forces and Torques</b>      |          |
| Basic Load Ratings C [N]       | 4070     |
| Basic Load Ratings C0 [N]      | 7800     |
| Static Moment Ratings-Ma [N-m] | 56.4     |
| Static Moment Ratings-Mb [N-m] | 56.4     |
| Static Moment Ratings-Mc [N-m] | 95.6     |
| <b>Weight</b>                  |          |
| Weight-Block [g]               | 93       |