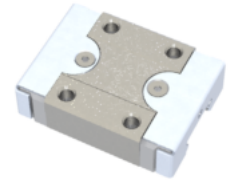


NMR 12MN SUE

Call 800-321-7800 or visit us online at www.nookindustries.com to configure and order your NMR 12MN SUE today!



Details

Size [mm]	12
Dimensions	
W [mm]	27
L [mm]	36.8
L1 [mm]	22
h2 [mm]	10.6
P1 [mm]	15
P2 [mm]	20
M x g2	M3 x 3.5
Ø [mm]	1.3
S [mm]	3.2
T [mm]	4.3

Forces and Torques

Basic Load Ratings C [N]	2308
Basic Load Ratings C0 [N]	3465
Static Moment Ratings-Ma [N-m]	12.9
Static Moment Ratings-Mb [N-m]	12.9
Static Moment Ratings-Mc [N-m]	21.5

Weight

Weight-Block [g]	34
------------------	----