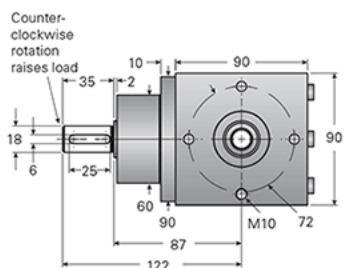
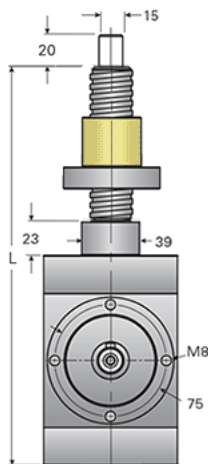
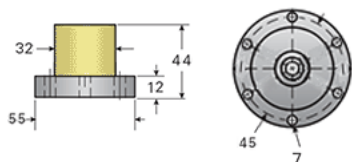


## G1-MSJ-UR 3:1

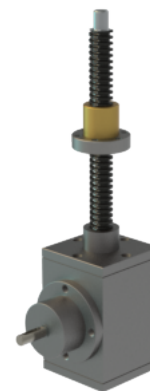
Call 800-321-7800 or visit us online at [www.nookindustries.com](http://www.nookindustries.com) to configure and order your G1-MSJ-UR 3:1 today!



For ordering, specify "L" dimension  
 $L(\text{min}) = \text{Travel} + 249$



Ball nut position A  
 Specify position B  
 for opposite



### Details

Capacity [kN]	20.6
Gear Ratio	3:1
Raise for One Turn of Worm [mm]	1.60
Torque to Raise 1 kN [Nm]	0.57
Tare Drag Torque [Nm]	1.70
Lifting Screw Diameter [mm]	24
Screw Lead [mm]	5
BackDrive Holding Torque [Nm]	0.16

### Performance Specifications

Maximum Input Torque [Nm]	50
---------------------------	----

### Weight

Base 0 Travel [kg]	7.70
Per 100mm of Travel [kg]	0.32
Grease [kg]	0.22