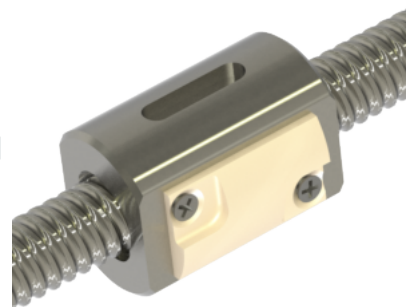
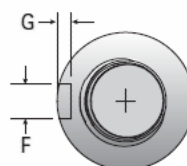
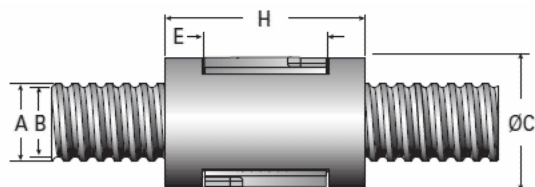


MBN 14 × 6 RA Cylindrical Keyed

Call 800-321-7800 or visit us online at www.nookindustries.com to configure and order your MBN 14 × 6 RA Cylindrical Keyed today!



Product Info

Nominal Rod Diameter [mm]	13.50
Material	4150
Thread Direction	RH

Details

Lead [mm]	6
Active Turns	5
Nominal Ball Dia. [mm]	2.000
Ball Nut Number	MBN11175
Nut Weight [g]	65.0
Screw Weight [g/m]	1008
End Code for Types 1,2, and 3	10
End Code for Types 4	6
End Code for Types 6	10
End Code for Types 7	8

Performance Specifications

Dynamic Load Ca [N]	6894
Static Load [N]	13081
Linear Speed (Based on DN Values) [mm/min]	30000

Forces and Torques

Torque to Raise 1 kN [N·m]	0.991
----------------------------	-------

Screw Dimensions

A [mm]	13.50
B [mm]	11.9

Nut Dimensions

C [mm]	30.0
H [mm]	40.0
E [mm]	20.0
F [mm]	5.0
G [mm]	3.00