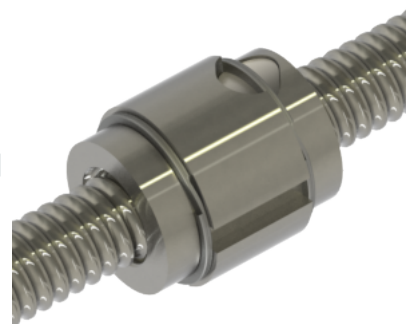
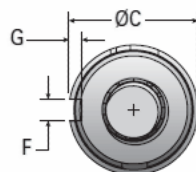
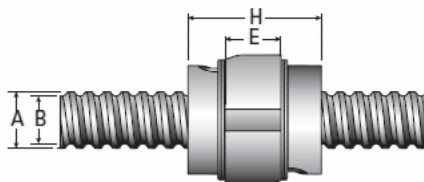


## MBN 10x2 RS Cylindrical Keyed

Call 800-321-7800 or visit us online at [www.nookindustries.com](http://www.nookindustries.com) to configure and order your MBN 10x2 RS Cylindrical Keyed today!



### Product Info

Nominal Rod Diameter [mm]	9.50
Material	SS
Thread Direction	RH

### Details

Lead [mm]	2
Active Turns	2
Nominal Ball Dia. [mm]	1.588
Ball Nut Number	MBN10733
Nut Weight [g]	29.0
Screw Weight [g/m]	464
End Code for Types 1,2, and 3	10
End Code for Types 4	4
End Code for Types 6	8
End Code for Types 7	8

### Performance Specifications

Dynamic Load Ca [N]	560
Static Load [N]	444
Linear Speed (Based on DN Values) [mm/min]	14000

### Forces and Torques

Torque to Raise 1 kN [N·m]	0.354
----------------------------	-------

### Screw Dimensions

A [mm]	9.50
B [mm]	8.2

### Nut Dimensions

C [mm]	20.0
H [mm]	22.0
E [mm]	12.0
F [mm]	3.0
G [mm]	1.80