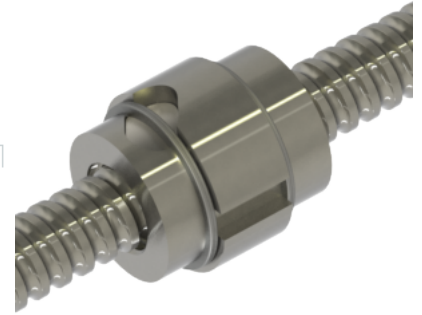
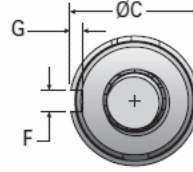
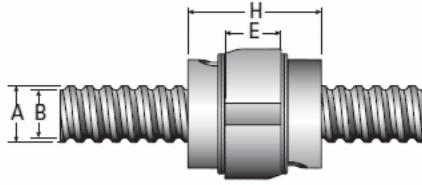


## MBN 8x2.5 RS Cylindrical Keyed

Call 800-321-7800 or visit us online at [www.nookindustries.com](http://www.nookindustries.com) to configure and order your MBN 8x2.5 RS Cylindrical Keyed today!



### Product Info

Nominal Rod Diameter [mm]	7.80
Material	SS
Thread Direction	RH

### Details

Lead [mm]	2.5
Active Turns	2
Nominal Ball Dia. [mm]	1.588
Ball Nut Number	MBN10729
Nut Weight [g]	20.0
Screw Weight [g/m]	321
End Code for Types 1,2, and 3	6
End Code for Types 4	4
End Code for Types 6	-
End Code for Types 7	-

### Performance Specifications

Dynamic Load Ca [N]	480
Static Load [N]	623
Linear Speed (Based on DN Values) [mm/min]	21900

### Forces and Torques

Torque to Raise 1 kN [N·m]	0.443
----------------------------	-------

### Screw Dimensions

A [mm]	7.80
B [mm]	6.6

### Nut Dimensions

C [mm]	18.0
H [mm]	18.6
E [mm]	7.7
F [mm]	3.0
G [mm]	1.80