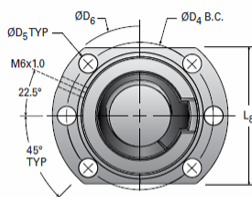
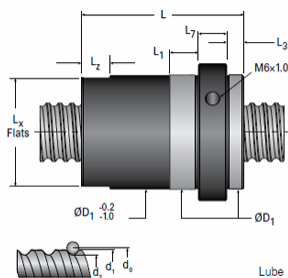


MBN32x5R-4FW

Call 800-321-7800 or visit us online at www.nookindustries.com to configure and order your MBN32x5R-4FW today!



Lube hole can be on either side of nut depending on size.
See table below for lube hole location.

Product Info

Nominal Rod Diameter [mm]	32
Material	Alloy
Thread Direction	RH

Details

Lead [mm]	5
Active Turns	4
Nominal Ball Dia. [mm]	3.500
Screw Weight [kg/m]	5.48
Nut Weight [kg]	0.65
Lube Hole Locaton	R
End Code for Types 1,2, and 3	25
End Code for Types 4	16
End Code for Types 5	25
End Code for Types 6	25
End Code for Types 7	25

Performance Specifications

Dynamic Load Ca [N]	18630
Static Load [N]	43790
Linear Speed (Based on DN Values) [mm/min]	11000

Screw Dimensions

d0 [mm]	32
d1 [mm]	31.26
d2 [mm]	28.38

Nut Dimensions

D1 (g6) [mm]	50
L [mm]	57
L1 [mm]	10
Lx [mm]	48
Lz [mm]	10
L3 (min) [mm]	6
L7 [mm]	12
L8 [mm]	62
D4 [mm]	65
D5 [mm]	6 × 9
D6 [mm]	80