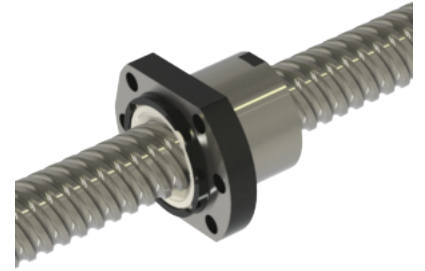
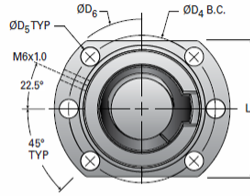
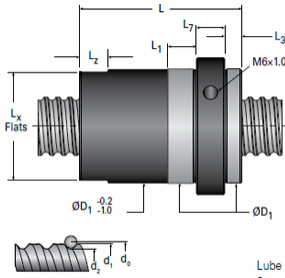


## MBN25x25R-4FW

Call 800-321-7800 or visit us online at [www.nookindustries.com](http://www.nookindustries.com) to configure and order your MBN25x25R-4FW today!



Lube hole can be on either side of nut depending on size.  
See table below for lube hole location.

### Product Info

Nominal Rod Diameter [mm]	25
Material	Alloy
Thread Direction	RH

### Details

Lead [mm]	25
Active Turns	4
Nominal Ball Dia. [mm]	3.500
Screw Weight [kg/m]	3.28
Nut Weight [kg]	0.27
Lube Hole Locaton	L
End Code for Types 1,2, and 3	20
End Code for Types 4	12
End Code for Types 5	20
End Code for Types 6	20
End Code for Types 7	20

### Performance Specifications

Dynamic Load Ca [N]	13680
Static Load [N]	28500
Linear Speed (Based on DN Values) [mm/min]	70000

### Screw Dimensions

d0 [mm]	25
d1 [mm]	24.26
d2 [mm]	21.38

### Nut Dimensions

D1 (g6) [mm]	40
L [mm]	40
L1 [mm]	10
Lx [mm]	39
Lz [mm]	5
L3 (min) [mm]	4
L7 [mm]	10
L8 [mm]	48
D4 [mm]	51
D5 [mm]	6 × 6.6
D6 [mm]	62