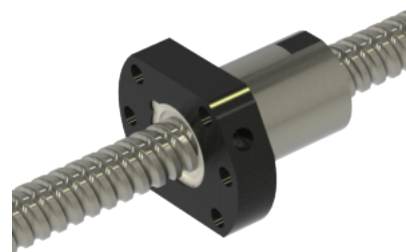
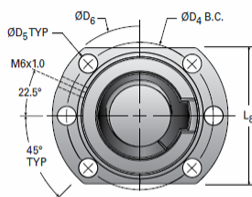
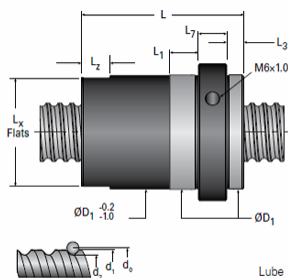


MBN16x10R-3FW

Call 800-321-7800 or visit us online at www.nookindustries.com to configure and order your MBN16x10R-3FW today!



Lube hole can be on either side of nut depending on size.
See table below for lube hole location.

Product Info

Nominal Rod Diameter [mm]	16
Material	Alloy
Thread Direction	RH

Details

Lead [mm]	10
Active Turns	3
Nominal Ball Dia. [mm]	3.000
Screw Weight [kg/m]	1.24
Nut Weight [kg]	0.22
Lube Hole Locaton	R
End Code for Types 1,2, and 3	12
End Code for Types 4	8
End Code for Types 5	12
End Code for Types 6	12
End Code for Types 7	10

Performance Specifications

Dynamic Load Ca [N]	8590
Static Load [N]	14290
Linear Speed (Based on DN Values) [mm/min]	43800

Screw Dimensions

d0 [mm]	16
d1 [mm]	14.98
d2 [mm]	12.90

Nut Dimensions

D1 (g6) [mm]	28
L [mm]	45
L1 [mm]	16
Lx [mm]	27
Lz [mm]	10
L3 (min) [mm]	-
L7 [mm]	12
L8 [mm]	40
D4 [mm]	42
D5 [mm]	6 × 5.5
D6 [mm]	52