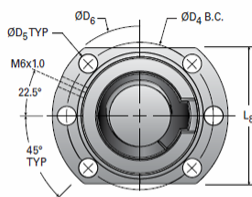
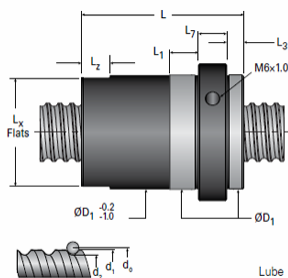


## MBN16x5R-4FW

Call 800-321-7800 or visit us online at [www.nookindustries.com](http://www.nookindustries.com) to configure and order your MBN16x5R-4FW today!



Lube hole can be on either side of nut depending on size.  
See table below for lube hole location.

### Product Info

Nominal Rod Diameter [mm]	16
Material	Alloy
Thread Direction	RH

### Details

Lead [mm]	5
Active Turns	4
Nominal Ball Dia. [mm]	3.500
Screw Weight [kg/m]	1.18
Nut Weight [kg]	0.22
Lube Hole Locaton	R
End Code for Types 1,2, and 3	12
End Code for Types 4	6
End Code for Types 5	12
End Code for Types 6	12
End Code for Types 7	10

### Performance Specifications

Dynamic Load Ca [N]	12150
Static Load [N]	18400
Linear Speed (Based on DN Values) [mm/min]	21900

### Screw Dimensions

d0 [mm]	16
d1 [mm]	15.26
d2 [mm]	12.38

### Nut Dimensions

D1 (g6) [mm]	28
L [mm]	57
L1 [mm]	10
Lx [mm]	27
Lz [mm]	10
L3 (min) [mm]	6
L7 [mm]	10
L8 [mm]	40
D4 [mm]	38
D5 [mm]	6 × 5.5
D6 [mm]	48