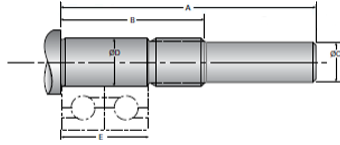


Type 6L, End Code 20

Call 800-321-7800 or visit us online at www.nookindustries.com to configure and order your Type 6L, End Code 20 today!



Product Info

Nominal Bearing Journal Size	20
------------------------------	----

Dimensions

A [mm]	86.5
B [mm]	53.0
C Maximum [MM]	16.00
C Minimum [MM]	15.98
D Maximum [mm]	20.007
D Minimum [mm]	19.994
E [mm]	38.00
Lock Nut	M20 x 1.0