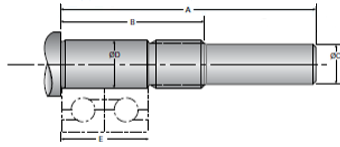


Type 6L, End Code 15

Call 800-321-7800 or visit us online at www.nookindustries.com to configure and order your Type 6L, End Code 15 today!



Product Info

Nominal Bearing Journal Size 15

Dimensions

A [mm]	60.5
B [mm]	40.0
C Maximum [MM]	12.00
C Minimum [MM]	11.98
D Maximum [mm]	15.006
D Minimum [mm]	14.995
E [mm]	28.00
Lock Nut	M15 x 1.0