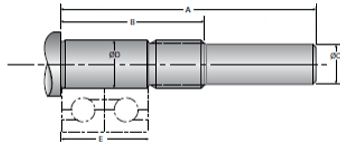


## Type 6L, End Code 12

Call 800-321-7800 or visit us online at [www.nookindustries.com](http://www.nookindustries.com) to configure and order your Type 6L, End Code 12 today!



### Product Info

Nominal Bearing Journal Size	12
------------------------------	----

### Dimensions

A [mm]	54.0
B [mm]	36.0
C Maximum [MM]	10.00
C Minimum [MM]	9.98
D Maximum [mm]	12.006
D Minimum [mm]	11.995
E [mm]	22.00
Lock Nut	M12 x 1.0