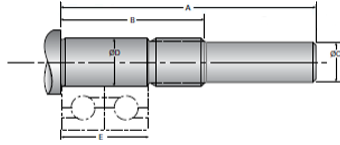


Type 6L, End Code 10

Call 800-321-7800 or visit us online at www.nookindustries.com to configure and order your Type 6L, End Code 10 today!



Product Info

| | |
|------------------------------|----|
| Nominal Bearing Journal Size | 10 |
|------------------------------|----|

Dimensions

| | |
|----------------|-----------|
| A [mm] | 53.5 |
| B [mm] | 36.0 |
| C Maximum [MM] | 8.00 |
| C Minimum [MM] | 7.98 |
| D Maximum [mm] | 10.005 |
| D Minimum [mm] | 9.996 |
| E [mm] | 20.00 |
| Lock Nut | M10 x 1.0 |