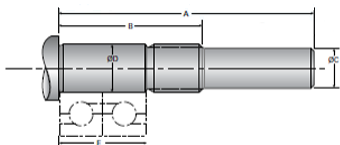


Type 6L, End Code 6

Call 800-321-7800 or visit us online at www.nookindustries.com to configure and order your Type 6L, End Code 6 today!



Product Info

Nominal Bearing Journal Size	6
------------------------------	---

Dimensions

A [mm]	38.0
B [mm]	28.0
C Maximum [MM]	4.00
C Minimum [MM]	3.98
D Maximum [mm]	6.005
D Minimum [mm]	5.996
E [mm]	20.00
Lock Nut	M6 x 0.75