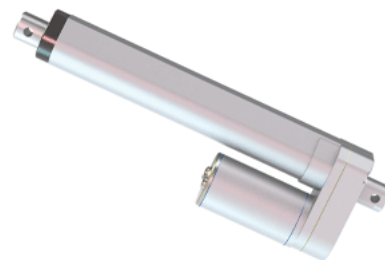
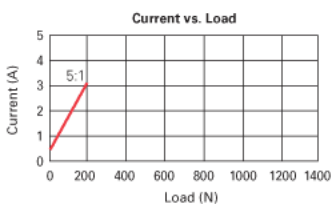
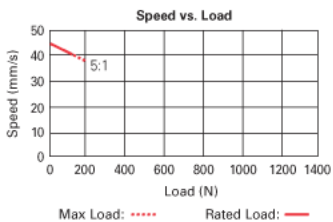
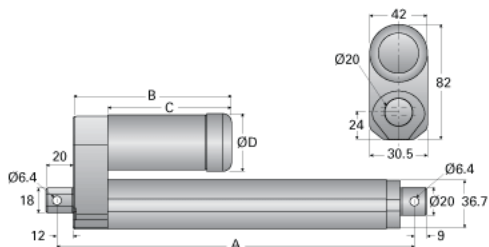


## VMD3-24-30

Call 800-321-7800 or visit us online at [www.nookindustries.com](http://www.nookindustries.com) to configure and order your VMD3-24-30 today!



	Retracted Length A ( $\pm 3.8$ mm)						B	C	D
Travel (in)	2	4	6	8	10	12	—	—	—
Travel ( $\pm 5$ mm)	50	100	150	200	250	300	—	—	—
<b>Standard</b>	158	209	260	311	362	413	95	72	40
<b>With Potentiometer</b>	195	246	297	348	399	450	132	72	40
<b>With Hall Effect Sensor</b>	158	209	260	311	362	413	113	90	42



### Product Info

Screw Type

Acme Screw

### Details

Voltage [VDC]

24

Gear Ratio

30:1

Speed [mm/s]

9

Load Capacity Rated Load [N]

700

Load Capacity Maximum Load [N]

800

Amps

1.5

### Performance Specifications

Duty Cycle [% of 5 Minutes]

25

Protection Class

IP65